

BESV

Premium e-bikes



USB-C
PORT

TCE
-
1.1

2023

Our Commitment

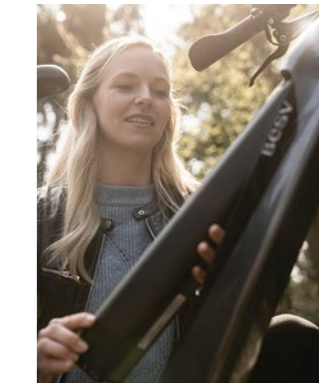
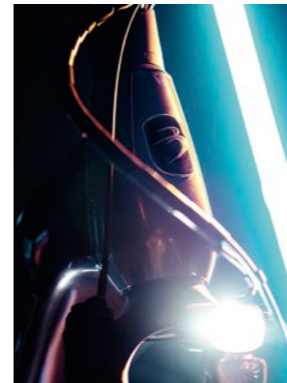
Our Story

2

Providing the customer an electric bicycle that is outstanding in performance and exciting to ride. Consequently this is why we have and will continue to focus on developing an unique and amazing user experience. Since this is the core of our BESV electric bike brand, it is the guiding force off all our efforts.



BESV was founded on certain enduring principles.



3

Beautiful

BESV creates products that capture the imagination and are exciting, because we believe that design should be inspiring and developed from the heart. Overall, our bikes are not just functional but also great looking.

Eco-friendly

We, as an international company take our responsibility towards the environment. Based on innovative technologies, we create sustainable products that contribute to enhancement of the environment with a view to now and the future.

Smarter

Using the most advanced technologies, we create intelligent products that optimize the user experience. For example, our e-bikes are not only responsive but also intuitive to different users and changing conditions.

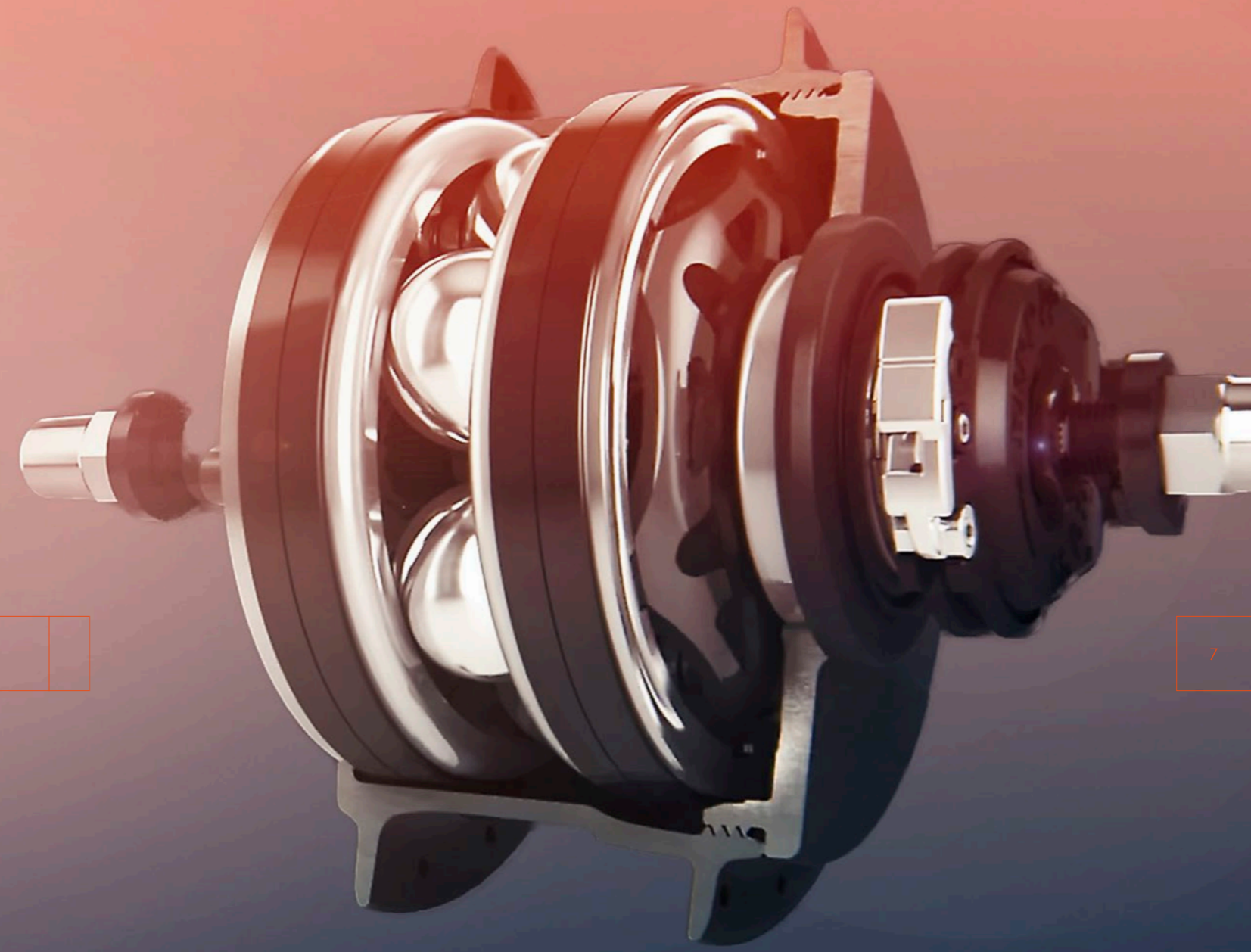
Vision

Together, these three principles represent a Vision for everything we do and form the initial letters of our name-BESV. It is also these principles that lead to our exceptional products. Truly great e-bikes with pedal assistance delivering a fabulous riding experience.



CITY eBIKES

Our city e-bikes are designed to take on modern city-life challenges. Each and every detail carefully chosen to serve you best in its function. Our 2-series frames are one of the stiffest in the market transferring all the power you put into it into forward movement. Our 1-series frames are designed for more suspension travel at the front and to fit wider tires. A Racktime rear carrier with the Snapit platform gives you the opportunity to fit panier bags with a simple and firm “click”. We have fitted internal hubs and closed chainguards to protect your drivetrain from getting damaged by the hazards of the city. These bikes are durable and made to last many rides. They are designed to give you the riding pleasure you are looking for.



STEPLESS SHIFTING

As simple as adjusting the volume on a radio.

With stepless manual technology, riders can effortlessly change their gear ratio, even under load. Thus we enable them to focus on the important aspects of their ride such as traffic or scenery. No more step changes, locked gears, empty pedaling, or creaking, just a unique ride feel created by the technology's ease of use.

The system enables low maintenance, long-lasting bikes, especially in a combination with a belt drive, the perfect fit for the new rider generation, focused on simplicity and comfort. Moreover, the technology can also be merged with powerful e-bike systems. The enviolo stepless manual technology was created based on use cases to serve specific rider needs, and consists of specifically designed internal gear hubs and matching controllers.



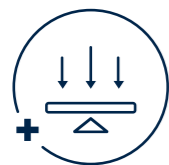
STEPLESS SHIFTING

Our bike models are fitted with a manual controller. The stepless manual technology is as simple as adjusting the volume on a radio. Just twist the manual controller and the bike does the rest.



NEAR SILENT

Our bikes equipped with enviolo's hubs offer a near silent and smooth ride. No more sounds of a jumping chain or clicking of the controller, just the sounds of your surroundings.



EFFORTLESS SHIFTING, EVEN UNDER LOAD

With enviolo we let you change gear ratio in any ride condition without ever having to stop pedaling or backpedal.



MAINTENANCE FREE

The enclosed hub offers protection against external influences which increases durability and extends product lifetime.

GREATER GEAR RATIO CHANGE

Enviolo hubs offer greater ratio range. The 310%-380% ratio range allows rides in any type of environment. Ride up a hill with ease on a cargo bike or go at high speed for a sportive ride. There's an ideal ratio for everyone



Trekking – 380% gear ratio



City – 310% gear ratio



CT 1.1

SIZES_	S (47cm), M (52cm), L (56cm), XL (60cm)
COLOR(S)_	Metallic malachite
FRAME_	BESV CT 1.Series alloy frame, Shimano Steps and internal battery compatible
DRIVE UNIT_	Shimano EP600 center-motor, 250W rated power, 85Nm of torque, 25km/h maximum assist
BATTERY_	720Wh integrated Lithium Ion battery, approved for Shimano Service Program, with Smart 4-5.6A charger
DISPLAY_	Shimano SC-E5003, left hand mounted, with LCD display
FORK_	SR Suntour Mobie25, Lockout, Air damping, tapered alloy steerer, travel 75mm, Thru-axle
CRANKSET_	Chainring: Gates CDX Spider 42T with chainguard / Crank arm: Samox for Shimano Steps
BOTTOM BRACKET_	Shimano, integrated in motor
PEDALS_	Wellgo pedals with reflectors
REAR DERAILLEUR_	Enviolo Trekking, 380% gear ratio
SHIFTERS_	Enviolo manual
CASSETTE_	Gates CDX rear sprocket / 24T / Enviolo 44T spline
CHAIN_	Gates CDX belt / 122T
WHEELSET_	Formula CL-71 front hub, Enviolo Trekking 380% gear ratio rear hub, 700c multichamber alloy rims 36H
TIRES_	Maxxis Metropass, 700x50c, Silkworm, 60 TPI wire bead with puncture protection, with reflective stripe
BRAKESET_	Shimano MT410, 2-piston hydraulic disc, with 180mm front and rear rotors
BRAKE LEVERS_	Shimano MT402, 3 finger lever
HEADSET_	Acros, AZX-585, 1.5" headset, angular contact bearings, integrated cable routing
HANDLEBAR_	Alloy City-Trekking rise bar, 6066 alloy, 40mm rise, sweep: 20 degree up, 31.8mm clamp
STEM_	3D Forged alloy City-Trekking stem, SP-Connect mount, adjustable 0-90 degree, 31.8mm clamp
GRIPS_	Comfortable gel grips with padding
SADDLE_	Selle Italia S5 Superflow
SEATPOST_	Suspension seatpost with anty-sideplay, 40mm travel, 31.6mm diameter, 12mm offset
FENDERS_	Alloy extruded fenders, front & rear 3/4 length, stainless steel hardware
HEADLIGHT_	Lezyne eBike Power E115, 6-12v, 115 lux, with reflector
TAILLIGHT_	Herrmans H-Cargo, 6-12v, with reflector
REAR CARRIER_	Tubular aluminium carrier, with Snapit platform and spring clamp, H-Cargo rear light mount
ACCESSORIES_	Adjustable kickstand

380^{*}
GEAR RATIO

75^{MM}
SUSPENSION
TRAVEL

85^{NM}
TORQUE

720^{WH}
BATTERY

E - SYSTEM

_Powerful Shimano EP600 motor with long lasting Darfon 720Wh battery

T I R E S

_On the safe side with the Maxxis Metropass.

B E L T D R I V E

_Long lasting and maintenance-free Gates CDX belt driv



CT 1.1 LS

SIZES_	XS (43cm), S (47cm), M (52cm), L (56cm)
COLOR(S)_	Metallic malachite
FRAME_	BESV CT 1.Series alloy frame, Shimano Steps and internal battery compatible
DRIVE UNIT_	Shimano EP600 center-motor, 250W rated power, 85Nm of torque, 25km/h maximum assist
BATTERY_	720Wh integrated Lithium Ion battery, approved for Shimano Service Program, with Smart 4-5.6A charger
DISPLAY_	Shimano SC-E5003, left hand mounted, with LCD display
FORK_	SR Suntour Mobie25, Lockout, Air damping, tapered alloy steerer, travel 75mm, Thru-axle
CRANKSET_	Chainring: Gates CDX Spider 42T with chainguard / Crank arm: Samox for Shimano Steps
BOTTOM BRACKET_	Shimano, integrated in motor
PEDALS_	Wellgo pedals with reflectors
REAR DERAILLEUR_	Enviolo Trekking, 380% gear ratio
SHIFTERS_	Enviolo manual
CASSETTE_	Gates CDX rear sprocket / 24T / Enviolo 44T spline
CHAIN_	Gates CDX belt / 122T
WHEELSET_	Formula CL-71 front hub, Enviolo Trekking 380% gear ratio rear hub, 700c multichamber alloy rims 36H
TIRES_	Maxxis Metropass, 700x50c, Silkworm, 60 TPI wire bead with puncture protection, with reflective stripe
BRAKESET_	Shimano MT410, 2-piston hydraulic disc, with 180mm front and rear rotors
BRAKE LEVERS_	Shimano MT402, 3 finger lever
HEADSET_	Acros, AZX-585, 1.5" headset, angular contact bearings, integrated cable routing
HANDLEBAR_	Alloy City-Trekking rise bar, 6066 alloy, 40mm rise, sweep: 20 degree up, 31.8mm clamp
STEM_	3D Forged alloy City-Trekking stem, SP-Connect mount, adjustable 0-90 degree, 31.8mm clamp
GRIPS_	Comfortable gel grips with padding
SADDLE_	Selle Italia S5 Superflow
SEATPOST_	Suspension seatpost with anty-sideplay, 40mm travel, 31.6mm diameter, 12mm offset
FENDERS_	Alloy extruded fenders, front & rear 3/4 length, stainless steel hardware
HEADLIGHT_	Lezyne eBike Power E115, 6-12v, 115 lux, with reflector
TAILLIGHT_	Herrmans H-Cargo, 6-12v, with reflector
REAR CARRIER_	Tubular aluminium carrier, with Snapit platform and spring clamp, H-Cargo rear light mount
ACCESSORIES_	Adjustable kickstand

380^{*}
GEAR RATIO

75^{MM}
SUSPENSION
TRAVEL

85^{NM}
TORQUE

720^{WH}
BATTERY

E - SYSTEM

_Powerful Shimano EP600 motor with long lasting Darfon 720Wh battery

G E A R I N G

_Always on right gear thanks to Enviolo 380 inner gear hub.

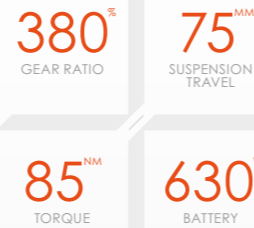
S A D D L E

_Comfort in long distance or everyday riding on Selle Italia S5 Superflow saddle.



CT 1.3

SIZES_	S (47cm), M (52cm), L (56cm), XL (60cm)
COLOR(S)_	Metallic khaki
FRAME_	BESV CT 1.Series alloy frame, Shimano Steps and internal battery compatible
DRIVE UNIT_	Shimano EP600 center-motor, 250W rated power, 85 Nm of torque, 25km/h maximum assist
BATTERY_	630Wh integrated Lithium Ion battery, approved for Shimano Service Program, with Smart 4-5.6A charger
DISPLAY_	Shimano SC-E5003, left hand mounted, with LCD display
FORK_	SR Suntour MobieA32, Lockout, Coil damping, tapered alloy steerer, travel 75mm, Thru-axle
CRANKSET_	Chainring: Gates CDX Spider 42T with chainguard / Crank arm: Samox for Shimano Steps
BOTTOM BRACKET_	Shimano, integrated in motor
PEDALS_	Wellgo pedals with reflectors
REAR DERAILLEUR_	Enviolo Trekking, 380% gear ratio
SHIFTERS_	Enviolo manual
CASSETTE_	Gates CDX rear sprocket / 24T / Enviolo 44T spline
CHAIN_	Gates CDX belt / 122T
WHEELSET_	Formula CL-71 front hub, Enviolo Trekking 380% gear ratio rear hub, 700c multichamber alloy rims 36H
TIRES_	Maxxis Metropass, 700x50c, Silkworm, 60 TPI wire bead with puncture protection, with reflective stripe
BRAKESET_	Shimano MT410, 2-piston hydraulic disc, with 180mm front and rear rotors
BRAKE LEVERS_	Shimano MT402, 3 finger lever
HEADSET_	Acros, AZX-585, 1.5" headset, angular contact bearings, integrated cable routing
HANDLEBAR_	Alloy City-Trekking rise bar, 6066 alloy, 40mm rise, sweep: 20 degree up, 31.8mm clamp
STEM_	3D Forged alloy City-Trekking stem, SP-Connect mount, adjustable 0-90 degree, 31.8mm clamp
GRIPS_	Comfortable gel grips with padding
SADDLE_	Selle Italia S5 Superflow
SEATPOST_	Suspension seatpost with anty-sideplay, 40mm travel, 31.6mm diameter, 12mm offset
FENDERS_	Alloy extruded fenders, front & rear 3/4 length, stainless steel hardware
HEADLIGHT_	Lezyne eBike Power E115, 6-12v, 115 lux, with reflector
TAILLIGHT_	Herrmans H-Cargo, 6-12v, with reflector
REAR CARRIER_	Tubular aluminium carrier, with Snapit platform and spring clamp, H-Cargo rear light mount
ACCESSORIES_	Adjustable kickstand



E - SYSTEM

_Powerful Shimano EP600 motor with long lasting Darfon 630Wh battery

SAFETY

_Powerful lights from Lezyne and Herrmans keeps you safe when riding.

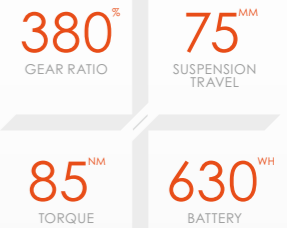
BRAKES

_Hydraulic disc brake with 180mm rotors.



CT 1.3 LS

SIZES_	XS (43cm), S (47cm), M (52cm), L (56cm)
COLOR(S)_	Metallic khaki
FRAME_	BESV CT 1.Series alloy frame, Shimano Steps and internal battery compatible
DRIVE UNIT_	Shimano EP600 center-motor, 250W rated power, 85Nm of torque, 25km/h maximum assist
BATTERY_	630Wh integrated Lithium Ion battery, approved for Shimano Service Program, with Smart 4-5.6A charger
DISPLAY_	Shimano SC-E5003, left hand mounted, with LCD display
FORK_	SR Suntour MobieA32, Lockout, Coil damping, tapered alloy steerer, travel 75mm, Thru-axle
CRANKSET_	Chainring: Gates CDX Spider 42T with chainguard / Crank arm: Samox for Shimano Steps
BOTTOM BRACKET_	Shimano, integrated in motor
PEDALS_	Wellgo pedals with reflectors
REAR DERAILLEUR_	Enviolo Trekking, 380% gear ratio
SHIFTERS_	Enviolo manual
CASSETTE_	Gates CDX rear sprocket / 24T / Enviolo 44T spline
CHAIN_	Gates CDX belt / 122T
WHEELSET_	Formula CL-71 front hub, Enviolo Trekking 380% gear ratio rear hub, 700c multichamber alloy rims 36H
TIRES_	Maxxis Metropass, 700x50c, Silkworm, 60 TPI wire bead with puncture protection, with reflective stripe
BRAKESET_	Shimano MT410, 2-piston hydraulic disc, with 180mm front and rear rotors
BRAKE LEVERS_	Shimano MT402, 3 finger lever
HEADSET_	Acros, AZX-585, 1.5" headset, angular contact bearings, integrated cable routing
HANDLEBAR_	Alloy City-Trekking rise bar, 6066 alloy, 40mm rise, sweep: 20 degree up, 31.8mm clamp
STEM_	3D Forged alloy City-Trekking stem, SP-Connect mount, adjustable 0-90 degree, 31.8mm clamp
GRIPS_	Comfortable gel grips with padding
SADDLE_	Selle Italia S5 Superflow
SEATPOST_	Suspension seatpost with anty-sideplay, 40mm travel, 31.6mm diameter, 12mm offset
FENDERS_	Alloy extruded fenders, front & rear 3/4 length, stainless steel hardware
HEADLIGHT_	Lezyne eBike Power E115, 6-12v, 115 lux, with reflector
TAILLIGHT_	Herrmans H-Cargo, 6-12v, with reflector
REAR CARRIER_	Tubular aluminium carrier, with Snapit platform and spring clamp, H-Cargo rear light mount
ACCESSORIES_	Adjustable kickstand



E - SYSTEM

_Powerful Shimano EP600 motor with long lasting Darfon 630Wh battery

TIRES

_On the safe side with the Maxxis Metropass.

BELT DRIVE

_Long lasting and maintenance-free Gates CDX belt drive

CT 2.1

SIZES_ M (50cm), L (55cm), XL (60cm)

COLOR(S)_ Steel grey

FRAME_ BESV CT 2.Series alloy frame, Shimano Steps and internal battery compatible

DRIVE UNIT_ Shimano EP600 center-motor, 250W rated power, 85Nm of torque, 25km/h maximum assist

BATTERY_ 504Wh integrated Lithium Ion battery, approved for Shimano Service Program, with Smart 2A charger

DISPLAY_ Shimano SC-E5003, left hand mounted, with LCD display

FORK_ SR Suntour Nex-E25, Lockout, Coil damping, tapered alloy steerer, travel 50mm, QR-axle

CRANKSET_ Samox for Shimano Steps, 38T chainring

BOTTOM BRACKET_ Shimano, integrated in motor

PEDALS_ Wellgo pedals with reflectors

REAR DERAILLEUR_ Enviolo Trekking, 380% gear ratio

SHIFTERS_ Enviolo manual

CASSETTE_ KMC for Enviolo, 18T

CHAIN_ KMC E101 EPT

WHEELSET_ Formula CL-1420 front hub, Enviolo Trekking 380% gear ratio rear hub, 700c multichamber alloy rims 36H

TIRES_ Maxxis Overdrive, 47x622, Silkshield, 60 TPI wire bead with puncture protection, with reflective stripe

BRAKESET_ Hydraulic disc brake, 2-piston, 180mm front and rear rotors

BRAKE LEVERS_ 2 finger hydraulic disc brake lever

HEADSET_ First, D346S, 1.5" headset, angular contact bearings

HANDLEBAR_ Alloy City-Trekking rise bar, 6066 alloy, 40mm rise, sweep: 20 degree up, 31.8mm clamp

STEM_ 3D Forged alloy City-Trekking stem, adjustable 0-90 degree, 31.8mm clamp

GRIPS_ Comfortable gel grips with padding

SADDLE_ Selle Royal Rio Moderate

SEATPOST_ Suspension seatpost with anty-sideplay, 40mm travel, 31.6mm diameter, 12mm offset

FENDERS_ Alloy extruded fenders, front & rear 3/4 length, stainless steel hardware

HEADLIGHT_ Lezyne eBike Mini E65, 6-12v, 65 lux, with reflector

TAILLIGHT_ Herrmans H-Cargo, 6-12v, with reflector

REAR CARRIER_ Tubular aluminium carrier, with Snapit platform and spring clamp, H-Cargo rear light mount

ACCESSORIES_ Adjustable kickstand, Chainguard

380^{*}
GEAR RATIO

50^{MM}
SUSPENSION
TRAVEL

85^{NM}
TORQUE

504^{WH}
BATTERY

MOTOR

_Powerful EP600 engine from Shimano is delivering up to 85Nm of torque.

COMFORT

_Adjustable stem, suspension seatpost and city type saddle will provide comfort in everyday riding.

SAFETY

_Powerful lights from Lezyne and Herrmans keeps you safe when riding.

CT 2.1 LS

SIZES_ S (45cm), M (50cm), L (55cm)

COLOR(S)_ Steel grey

FRAME_ BESV CT 2.Series alloy frame, Shimano Steps and internal battery compatible

DRIVE UNIT_ Shimano EP600 center-motor, 250W rated power, 85Nm of torque, 25km/h maximum assist

BATTERY_ 504Wh integrated Lithium Ion battery, approved for Shimano Service Program, with Smart 2A charger

DISPLAY_ Shimano SC-E5003, left hand mounted, with LCD display

FORK_ SR Suntour Nex-E25, Lockout, Coil damping, tapered alloy steerer, travel 50mm, QR-axle

CRANKSET_ Samox for Shimano Steps, 38T chainring

BOTTOM BRACKET_ Shimano, integrated in motor

PEDALS_ Wellgo pedals with reflectors

REAR DERAILLEUR_ Enviolo Trekking, 380% gear ratio

SHIFTERS_ Enviolo manual

CASSETTE_ KMC for Enviolo, 18T

CHAIN_ KMC E101 EPT

WHEELSET_ Formula CL-1420 front hub, Enviolo Trekking 380% gear ratio rear hub, 700c multichamber alloy rims 36H

TIRES_ Maxxis Overdrive, 47x622, Silkshield, 60 TPI wire bead with puncture protection, with reflective stripe

BRAKESET_ Hydraulic disc brake, 2-piston, 180mm front and rear rotors

BRAKE LEVERS_ 2 finger hydraulic disc brake lever

HEADSET_ First, D346S, 1.5" headset, angular contact bearings

HANDLEBAR_ Alloy City-Trekking rise bar, 6066 alloy, 40mm rise, sweep: 20 degree up, 31.8mm clamp

STEM_ 3D Forged alloy City-Trekking stem, adjustable 0-90 degree, 31.8mm clamp

GRIPS_ Comfortable gel grips with padding

SADDLE_ Selle Royal Rio Moderate

SEATPOST_ Suspension seatpost with anty-sideplay, 40mm travel, 31.6mm diameter, 12mm offset

FENDERS_ Alloy extruded fenders, front & rear 3/4 length, stainless steel hardware

HEADLIGHT_ Lezyne eBike Mini E65, 6-12v, 65 lux, with reflector

TAILLIGHT_ Herrmans H-Cargo, 6-12v, with reflector

REAR CARRIER_ Tubular aluminium carrier, with Snapit platform and spring clamp, H-Cargo rear light mount

ACCESSORIES_ Adjustable kickstand, Chainguard

380^{*}
GEAR RATIO

50^{MM}
SUSPENSION
TRAVEL

85^{NM}
TORQUE

504^{WH}
BATTERY

MOTOR

_Powerful EP600 engine from Shimano is delivering up to 85Nm of torque.

CARRIER

_With Snapit platform from Racktime you can attach many bags and accessories to the carrier platform.

BRAKES

_Hydraulic disc brake with 180mm rotors.

CT 2.2 LS

SIZES_ S (45cm), M (50cm), L (55cm)

COLOR(S)_ Snow white

FRAME_ BESV CT 2.Series alloy frame, Shimano Steps and internal battery compatible

DRIVE UNIT_ Shimano E6110 center-motor, 250W rated power, 60Nm of torque, 25km/h maximum assist

BATTERY_ 504Wh integrated Lithium Ion battery, approved for Shimano Service Program, with Smart 2A charger

DISPLAY_ Shimano SC-E5000, left hand mounted, with LCD display

FORK_ SR Suntour Nex-E25, Lockout, Coil damping, tapered alloy steerer, travel 50mm, QR-axle

CRANKSET_ Samox for Shimano Steps, 38T chainring

BOTTOM BRACKET_ Shimano, integrated in motor

PEDALS_ Wellgo pedals with reflectors

REAR DERAILLEUR_ Enviolo City, 310% gear ratio

SHIFTERS_ Enviolo manual

CASSETTE_ KMC for Enviolo, 20T

CHAIN_ KMC E101 EPT

WHEELSET_ Formula CL-1420 front hub, Enviolo City 310% gear ratio rear hub, 700c multichamber alloy rims 36H

TIRES_ Maxxis Overdrive, 47x622, Silkshield, 60 TPI wire bead with puncture protection, with reflective stripe

BRAKESET_ Shimano MT200, 2-piston hydraulic disc, with 180mm front and 160mm rear rotors

BRAKE LEVERS_ Shimano MT201, 3 finger lever

HEADSET_ First, D346S, 1.5" headset, angular contact bearings

HANDLEBAR_ Alloy City-Trekking rise bar, 6066 alloy, 40mm rise, sweep: 20 degree up, 31.8mm clamp

STEM_ 3D Forged alloy City-Trekking stem, adjustable 0-90 degree, 31.8mm clamp

GRIPS_ Comfortable gel grips with padding

SADDLE_ Selle Royal Rio Moderate

SEATPOST_ Suspension seatpost with anty-sideplay, 40mm travel, 31.6mm diameter, 12mm offset

FENDERS_ Alloy extruded fenders, front & rear 3/4 length, stainless steel hardware

HEADLIGHT_ Lezyne eBike Mini E65, 6-12v, 65 lux, with reflector

TAILLIGHT_ Herrmans H-Cargo, 6-12v, with reflector

REAR CARRIER_ Tubular aluminium carrier, with Snapit platform and spring clamp, H-Cargo rear light mount

ACCESSORIES_ Adjustable kickstand, Chainguard



E - SYSTEM

_Powerful Shimano E6110 motor with long lasting Darfon 504Wh battery.

T I R E S

_On the safe side with the Maxxis Overdrive.

B R A K E S

_Hydraulic disc brake with 180/160mm rotors.

CT 2.3

SIZES_ M (50cm) L (55cm), XL (60cm)

COLOR(S)_ Denim blue

FRAME_ BESV CT 2.Series alloy frame, Shimano Steps and internal battery compatible

DRIVE UNIT_ Shimano E5000 center-motor, 250W rated power, 40Nm of torque, 25km/h maximum assist

BATTERY_ 504Wh integrated Lithium Ion battery, approved for Shimano Service Program, with Smart 2A charger

DISPLAY_ Shimano SC-E5000, left hand mounted, with LCD display

FORK_ SR Suntour Nex-E25, Lockout, Coil damping, tapered alloy steerer, travel 50mm, QR-axle

CRANKSET_ Shimano FC-E5010 for Shimano E5000, 38T Shimano CR-E50 chainring

BOTTOM BRACKET_ Shimano, integrated in motor

PEDALS_ Wellgo pedals with reflectors

REAR DERAILLEUR_ New Enviolo hub

SHIFTERS_ Enviolo manual

CASSETTE_ KMC for Enviolo, 22T

CHAIN_ KMC Z1 EPT

WHEELSET_ Formula CL-1420 front hub, new Enviolo rear hub, CN streight stainless steel spokes, SR DB-30, 700c multichamber alloy rims for disc brakes with 36H

TIRES_ Maxxis Overdrive, 47x622, Silkshield, 60 TPI wire bead with puncture protection, with reflective stripe

BRAKESET_ Shimano MT200, 2-piston hydraulic disc, with 180mm front and rear rotors

BRAKE LEVERS_ Shimano MT201, 3 finger lever

HEADSET_ First, D346S, 1.5" headset, angular contact bearings

HANDLEBAR_ Alloy City-Trekking rise bar, 6066 alloy, 40mm rise, sweep: 20 degree up, 31.8mm clamp

STEM_ 3D Forged alloy City-Trekking stem, adjustable 0-90 degree, 31.8mm clamp

GRIPS_ Comfortable gel grips with padding

SADDLE_ Selle Royal Rio Moderate

SEATPOST_ Suspension seatpost with anty-sideplay, 40mm travel, 31.6mm diameter, 12mm offset

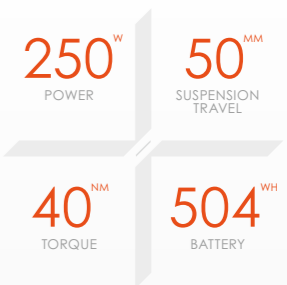
FENDERS_ Alloy extruded fenders, front & rear 3/4 length, stainless steel hardware

HEADLIGHT_ Lezyne eBike Mini E65, 6-12v, 65 lux, with reflector

TAILLIGHT_ Herrmans H-Cargo, 6-12v, with reflector

REAR CARRIER_ Tubular aluminium carrier, with Snapit platform and spring clamp, H-Cargo rear light mount

ACCESSORIES_ Adjustable kickstand, Chainguard



E - SYSTEM

_Efficient Shimano E5000 motor with long lasting Darfon 504Wh battery.

C O M F O R T

_Adjustable stem, suspension seatpost and city type saddle will provide comfort in everyday riding.

B R A K E S

_Hydraulic disc brake with 180/160mm rotors.



Denim blue

CT 2.3 LS

SIZES_	S (45cm), M (50cm), L (55cm)
COLOR(S)_	Denim blue / Rock grey / Night Black
FRAME_	BESV CT 2.Series alloy frame, Shimano Steps and internal battery compatible
DRIVE UNIT_	Shimano E5000 center-motor, 250W rated power, 40Nm of torque, 25km/h maximum assist
BATTERY_	504Wh integrated Lithium Ion battery, approved for Shimano Service Program, with Smart 2A charger
DISPLAY_	Shimano SC-E5000, left hand mounted, with LCD display
FORK_	SR Suntour Nex-E25, Lockout, Coil damping, tapered alloy steerer, travel 50mm, QR-axle
CRANKSET_	Shimano FC-E5010 for Shimano E5000, 38T Shimano CR-E50 chainring
BOTTOM BRACKET_	Shimano, integrated in motor
PEDALS_	Wellgo pedals with reflectors
REAR DERAILLEUR_	New Enviolo hub
SHIFTERS_	Enviolo manual
CASSETTE_	KMC for Enviolo, 22T
CHAIN_	KMC Z1 EPT
WHEELSET_	Formula CL-1420 front hub, new Enviolo rear hub, CN straight stainless steel spokes, SR DB-30, 700c multichamber alloy rims for disc brakes with 36H
TIRES_	Maxxis Overdrive, 47x622, Silkshield, 60 TPI wire bead with puncture protection, with reflective stripe
BRAKESSET_	Shimano MT200, 2-piston hydraulic disc, with 180mm front and rear rotors
BRAKE LEVERS_	Shimano MT201, 3 finger lever
HEADSET_	First, D346S, 1.5" headset, angular contact bearings
HANDLEBAR_	Alloy City-Trekking rise bar, 6066 alloy, 40mm rise, sweep: 20 degree up, 31.8mm clamp
STEM_	3D Forged alloy City-Trekking stem, adjustable 0-90 degree, 31.8mm clamp
GRIPS_	Comfortable gel grips with padding
SADDLE_	Selle Royal Rio Moderate
SEATPOST_	Suspension seatpost with anty-sideplay, 40mm travel, 31.6mm diameter, 12mm offset
FENDERS_	Alloy extruded fenders, front & rear 3/4 length, stainless steel hardware
HEADLIGHT_	Lezyne eBike Mini E65, 6-12v, 65 lux, with reflector
TAILLIGHT_	Herrmans H-Cargo, 6-12v, with reflector
REAR CARRIER_	Tubular aluminium carrier, with Snapit platform and spring clamp, H-Cargo rear light mount
ACCESSORIES_	Adjustable kickstand, Chainguard

250^W
POWER

50^{MM}
FORK
TRAVEL

40^{NM}
TORQUE

504^{WH}
BATTERY

E - SYSTEM

_Efficient Shimano E5000 motor with long lasting Darfon 504Wh battery.

GEARING

_Always on right gear thanks to Enviolo inner gear hub.

COLORS

_Three color version to choose.



Night Black



Rock grey

CT 2.5 LS

SIZES_ Lady: S (45cm), Man: (50cm), L (55cm)

COLOR(S)_ Night black

FRAME_ BESV CT 2.5 Series alloy frame, Shimano Steps and internal battery compatible

DRIVE UNIT_ Shimano E5000 center-motor, 250W rated power, 40Nm of torque, 25km/h maximum assist

BATTERY_ 504Wh integrated Lithium Ion battery, approved for Shimano Service Program, with Smart 2A charger

DISPLAY_ Shimano SC-E5000, left hand mounted, with LCD display

FORK_ SR Suntour Nex-E25, Lockout, Coil damping, tapered alloy steerer, travel 50mm, QR-axle

CRANKSET_ Shimano FC-E5010 for Shimano E5000, 38T Shimano CR-E50 chainring

BOTTOM BRACKET_ Shimano, integrated in motor

PEDALS_ Wellgo pedals with reflectors

REAR DERAILLEUR_ Shimano Nexus 7 speed

SHIFTERS_ Shimano Nexus 7 speed

CASSETTE_ Shimano Inner Gear sprocket, 22T

CHAIN_ KMC Z1 EPT

WHEELSET_ Formula CL-1420 front hub, Shimano Nexus 7 speed rear hub, 700c multichamber alloy rims 32H

TIRES_ Maxxis Overdrive, 47x622, Silkshield, 60 TPI wire bead with puncture protection, with reflective stripe

BRAKESET_ Shimano MT200, 2-piston hydraulic disc, with 160mm front and rear rotors

BRAKE LEVERS_ Shimano MT201, 3 finger lever

HEADSET_ First, D346S, 1.5" headset, angular contact bearings

HANDLEBAR_ Alloy City-Trekking rise bar, 6066 alloy, 40mm rise, sweep: 20 degree up, 31.8mm clamp

STEM_ 3D Forged alloy City-Trekking stem, adjustable 0-90 degree, 31.8mm clamp

GRIPS_ Comfortable gel grips with padding

SADDLE_ Selle Royal Moderate

SEATPOST_ Promax SP-226, 31.6mm diameter

FENDERS_ Alloy extruded fenders, front & rear 3/4 length, stainless steel hardware

HEADLIGHT_ Herrmans MR GO E-Bike, 120 Lumens, 6-12v, with reflector, crow mounted

TAILLIGHT_ Herrmans H-Cargo, 6-12v, with reflector

REAR CARRIER_ Tubular aluminium carrier, with Snapit platform and spring clamp, H-Cargo rear light mount

ACCESSORIES_ Adjustable kickstand, Chainguard

7
SPEED

50^{MM}
FORK
TRAVEL

40^{Nm}
TORQUE

504^{WH}
BATTERY

MOTOR

_Efficient Shimano E5000 motor with long lasting Darfon 504Wh battery.

TIRES

_On the safe side with the Maxxis Overdrive.

BRAKES

_Hydraulic disc brake with 160mm rotors.



PSF 1

SIZES_ One size

COLOR_ Gold and black with white decals / Gray blue and black with white decals

FRAME_ Rear-suspension and foldable BESV premium alloy frame with back side integrated Darfon battery, for Algorithm eBike drive system, post disc mount, cold-forged dropout and replaceable hanger

DRIVE UNIT_ Bafang rear hub motor with torque sensor, 250W rated power, 25km/h maximum assist

BATTERY_ 378Wh integrated Lithium Ion battery, approved for Shimano Service Program, easily removable, with floating connection port, with 2A charger

DISPLAY_ BESV HMI display with Smart APP Mode, USB port and wireless connectivity

FORK_ Rigid and foldable alloy BESV fork for post mount disc brakes

REAR SHOCK_ BESV Air shock

CRANKSET_ BESV crank, 48T chainring, 170mm length, with chain ring guard

BOTTOM BRACKET_ Bafang bottom bracket with high quality integrated torque sensor

PEDALS_ Wellgo M273DU with reflectors

REAR DERAILLEUR_ Shimano Tiagra 10 speed

SHIFTERS_ Shimano Tiagra 10 speed

CASSETTE_ Shimano Tiagra 10 speed, 11-28T

CHAIN_ KMC e10 EPT

WHEELSET_ Joytech front hub, Bafang rear hub motor, for 6-bolts disc brakes, straight stainless steel spokes, 20" multichamber alloy rims for disc brakes with 32H

TIRES_ BESV by Duro, DB7023, 20"x1.5", wire bead, with reflective stripe

BRAKESET_ Promax DSK-300, 2-piston mechanical disc, with 160mm front and rear rotors

BRAKE LEVERS_ Promax BL-42, 2 finger mechanical lever

HEADSET_ 1 1/8" headset, retainer bearings

HANDLEBAR_ Flat bar, 2014 alloy, width: 580mm

STEM_ Folding stem FH-11, 350mm height

GRIPS_ Comfortable gel grips with padding

SADDLE_ Comfortable saddle with D1 padding

SEATPOST_ Alloy micro-adjust, 34.9mm diameter, 17mm offset

FENDERS_ Front & rear fender, 3/4 length, stainless steel hardware

HEADLIGHT_ Front reflector

TAILLIGHT_ Rear reflector

ACCESSORIES_ Kickstand

10
SPEED

20"
TYRES

250^W
MOTOR

378^{WH}
BATTERY

FOLDABLE

_Easy to operate system helps to fold the PSF1 in just few seconds.

BATTERY

_Detachable battery is nicely integrated in the frame and delivers 378Wh of energy to the system.

BRAKES

_Equipped with disc brakes.



TREKKING

eBIKES

Our trekking e-bikes are designed with comfort, versatility and long distance rides in mind. The bikes are all fitted with powerful motors and big capacity batteries. When it comes to drivetrains the obvious choice was to go with 9, 10, 11 and even 12 speed gears in case you need to go uphill or ride at high speed on the flats. The frames are built for comfort, as they are fit with wide tires and have plenty of front suspension travel. Travel the distance but travel in comfort was our aim. A Racktime rear carrier with the Snapit platform gives you the opportunity to fit panier bags with a simple and firm "click". This will allow you to carry your groceries but also all the stuff that is needed for a bike packing tour.



TR 1.1

SIZES_	S (47cm), M (52cm), L (56cm), XL (60cm)
COLOR(S)_	Metallic khaki
FRAME_	BESV TR 1.Series alloy frame, Shimano Steps and internal battery compatible
DRIVE UNIT_	Shimano EP600 center-motor, 250W rated power, 85Nm of torque, 25km/h maximum assist
BATTERY_	720Wh integrated Lithium Ion battery, approved for Shimano Service Program, with Smart 4-5.6A charger
DISPLAY_	Shimano SC-E5003, left hand mounted, with LCD display
FORK_	SR Suntour Mobie25, Lockout, Air damping, tapered alloy steerer, travel 75mm, Thru-axle
CRANKSET_	Samox for Shimano Steps, 38T chainring
BOTTOM BRACKET_	Shimano, integrated in motor
PEDALS_	Wellgo pedals with reflectors
REAR DERAILLEUR_	Shimano Deore XT RD-M8120, 12 speed
SHIFTERS_	Shimano Deore SL-M6100, 12 speed
CASSETTE_	Shimano SLX CS-M7100, 12 speed, 10-45T
CHAIN_	KMC e12Turbo, with Quick-Link
WHEELSET_	Formula CL-71 front hub, Shimano HB-MT410B rear hub, 700c multichamber alloy rims 36H
TIRES_	Maxxis Metropass, 700x50c, Silkworm, 60 TPI wire bead with puncture protection, with reflective stripe
BRAKESET_	Shimano MT420/MT410, 4/2-piston hydraulic disc, with 180mm front and rear rotors
BRAKE LEVERS_	Shimano MT402, 3 finger lever
HEADSET_	Acros, AZX-585, 1.5" headset, angular contact bearings, integrated cable routing
HANDLEBAR_	Alloy City-Trekking rise bar, 6066 alloy, 40mm rise, sweep: 20° up, 31.8mm clamp
STEM_	3D Forged alloy Trekking stem, adjustable 0-90°, 31.8mm clamp
GRIPS_	Comfortable gel grips with padding
SADDLE_	Selle Italia S5 Superflow
SEATPOST_	Promax SP-726, 31.6mm diameter
FENDERS_	Alloy extruded fenders, front & rear 3/4 length, stainless steel hardware
HEADLIGHT_	Lezyne eBike Power E115, 6-12v, 115 lux, with reflector
TAILLIGHT_	Herrmans H-Cargo, 6-12v, with reflector
REAR CARRIER_	Tubular aluminium carrier, with Snapit platform and spring clamp, H-Cargo rear light mount
ACCESSORIES_	Adjustable kickstand, Chainguard

12
SPEED

75^{MM}
FORK TRAVEL

85^{Nm}
TORQUE

720^{WH}
BATTERY

E - SYSTEM

_Powerful Shimano EP600 motor with long lasting Darfon 720Wh battery.

T I R E S

_On the safe side with the Maxxis Metropass.

B R A K E S

_Hydraulic disc brake with 180mm rotors.



TR 1.1 LS

SIZES_	XS (43cm), S (47cm), M (52cm), L (56cm)
COLOR(S)_	Metallic khaki
FRAME_	BESV TR 1.Series alloy frame, Shimano Steps and internal battery compatible
DRIVE UNIT_	Shimano EP600 center-motor, 250W rated power, 85Nm of torque, 25km/h maximum assist
BATTERY_	720Wh integrated Lithium Ion battery, approved for Shimano Service Program, with Smart 4-5.6A charger
DISPLAY_	Shimano SC-E5003, left hand mounted, with LCD display
FORK_	SR Suntour Mobie25, Lockout, Air damping, tapered alloy steerer, travel 75mm, Thru-axle
CRANKSET_	Samox for Shimano Steps, 38T chainring
BOTTOM BRACKET_	Shimano, integrated in motor
PEDALS_	Wellgo pedals with reflectors
REAR DERAILLEUR_	Shimano Deore XT RD-M8120, 12 speed
SHIFTERS_	Shimano Deore SL-M6100, 12 speed
CASSETTE_	Shimano SLX CS-M7100, 12 speed, 10-45T
CHAIN_	KMC e12Turbo, with Quick-Link
WHEELSET_	Formula CL-71 front hub, Shimano HB-MT410B rear hub, 700c multichamber alloy rims 36H
TIRES_	Maxxis Metropass, 700x50c, Silkworm, 60 TPI wire bead with puncture protection, with reflective stripe
BRAKESET_	Shimano MT420/MT410, 4/2-piston hydraulic disc, with 180mm front and rear rotors
BRAKE LEVERS_	Shimano MT402, 3 finger lever
HEADSET_	Acros, AZX-585, 1.5" headset, angular contact bearings, integrated cable routing
HANDLEBAR_	Alloy City-Trekking rise bar, 6066 alloy, 40mm rise, sweep: 20° up, 31.8mm clamp
STEM_	3D Forged alloy Trekking stem, adjustable 0-90°, 31.8mm clamp
GRIPS_	Comfortable gel grips with padding
SADDLE_	Selle Italia S5 Superflow
SEATPOST_	Promax SP-726, 31.6mm diameter
FENDERS_	Alloy extruded fenders, front & rear 3/4 length, stainless steel hardware
HEADLIGHT_	Lezyne eBike Power E115, 6-12v, 115 lux, with reflector
TAILLIGHT_	Herrmans H-Cargo, 6-12v, with reflector
REAR CARRIER_	Tubular aluminium carrier, with Snapit platform and spring clamp, H-Cargo rear light mount
ACCESSORIES_	Adjustable kickstand, Chainguard

12
SPEED

75^{MM}
FORK TRAVEL

85^{Nm}
TORQUE

720^{WH}
BATTERY

E - SYSTEM

_Powerful Shimano EP600 motor with long lasting Darfon 720Wh battery.

D R I V E T R A I N

_High-performance, 12-speed, Shimano XT drivetrain with 10-45 teeth cassette.

S A D D L E

_Comfort in long distance or everyday riding on Selle Italia S5 Superflow saddle.



TR 1.2

SIZES_	S (47cm), M (52cm), L (56cm), XL (60cm)
COLOR(S)_	Metallic blue
FRAME_	BESV TR 1.Series alloy frame, Shimano Steps and internal battery compatible
DRIVE UNIT_	Shimano EP600 center-motor, 250W rated power, 85Nm of torque, 25km/h maximum assist
BATTERY_	630Wh integrated Lithium Ion battery, approved for Shimano Service Program, with Smart 4-5.6A charger
DISPLAY_	Shimano SC-E5003, left hand mounted, with LCD display
FORK_	SR Suntour Mobie25, Lockout, Air damping, tapered alloy steerer, travel 75mm, Thru-axle
CRANKSET_	Samox for Shimano Steps, 38T chainring
BOTTOM BRACKET_	Shimano, integrated in motor
PEDALS_	Wellgo pedals with reflectors
REAR DERAILLEUR_	Microshift XLE 11, 11 speed
SHIFTERS_	Microshift XLE 11, 11 speed
CASSETTE_	Microshift XLE 11, 11 speed, 11-42T
CHAIN_	KMC e11Turbo, with Quick-Link
WHEELSET_	Shimano HB-MT400 front hub, Formula CL-3248 rear hub, 700c multichamber alloy rims 36H
TIRES_	Maxxis Metropass, 700x50c, Silkworm, 60 TPI wire bead with puncture protection, with reflective stripe
BRAKESET_	Shimano MT410, 2-piston hydraulic disc, with 180mm front and rear rotors
BRAKE LEVERS_	Shimano MT402, 3 finger lever
HEADSET_	Acros, AZX-585, 1.5" headset, angular contact bearings, integrated cable routing
HANDLEBAR_	Alloy City-Trekking rise bar, 6066 alloy, 40mm rise, sweep: 20 degree up, 31.8mm clamp
STEM_	3D Forged alloy Trekking stem, adjustable 0-90 degree, 31.8mm clamp
GRIPS_	Comfortable gel grips with padding
SADDLE_	Selle Italia S5 Superflow
SEATPOST_	Promax SP-726, 31.6mm diameter
FENDERS_	Alloy extruded fenders, front & rear 3/4 length, stainless steel hardware
HEADLIGHT_	Lezyne eBike Power E115, 6-12v, 115 lux, with reflector
TAILLIGHT_	Herrmans H-Cargo, 6-12v, with reflector
REAR CARRIER_	Tubular aluminium carrier, with Snapit platform and spring clamp, H-Cargo rear light mount
ACCESSORIES_	Adjustable kickstand, Chainguard

11
SPEED

75^{MM}
FORK TRAVEL

85^{Nm}
TORQUE

630^{WH}
BATTERY

E - SYSTEM

_Powerful Shimano EP600 motor with long lasting Darfon 630Wh battery.

SAFETY

_Powerful lights from Lezyne and Herrmans keeps you safe when riding.

BRAKES

_Hydraulic disc brake with 180mm rotors.



TR 1.2 LS

SIZES_	XS (43cm), S (47cm), M (52cm), L (56cm)
COLOR(S)_	Metallic blue
FRAME_	BESV TR 1.Series alloy frame, Shimano Steps and internal battery compatible
DRIVE UNIT_	Shimano EP600 center-motor, 250W rated power, 85Nm of torque, 25km/h maximum assist
BATTERY_	630Wh integrated Lithium Ion battery, approved for Shimano Service Program, with Smart 4-5.6A charger
DISPLAY_	Shimano SC-E5003, left hand mounted, with LCD display
FORK_	SR Suntour Mobie25, Lockout, Air damping, tapered alloy steerer, travel 75mm, Thru-axle
CRANKSET_	Samox for Shimano Steps, 38T chainring
BOTTOM BRACKET_	Shimano, integrated in motor
PEDALS_	Wellgo pedals with reflectors
REAR DERAILLEUR_	Microshift XLE 11, 11 speed
SHIFTERS_	Microshift XLE 11, 11 speed
CASSETTE_	Microshift XLE 11, 11 speed, 11-42T
CHAIN_	KMC e11Turbo, with Quick-Link
WHEELSET_	Shimano HB-MT400 front hub, Formula CL-3248 rear hub, 700c multichamber alloy rims 36H
TIRES_	Maxxis Metropass, 700x50c, Silkworm, 60 TPI wire bead with puncture protection, with reflective stripe
BRAKESET_	Shimano MT410, 2-piston hydraulic disc, with 180mm front and rear rotors
BRAKE LEVERS_	Shimano MT402, 3 finger lever
HEADSET_	Acros, AZX-585, 1.5" headset, angular contact bearings, integrated cable routing
HANDLEBAR_	Alloy City-Trekking rise bar, 6066 alloy, 40mm rise, sweep: 20 degree up, 31.8mm clamp
STEM_	3D Forged alloy Trekking stem, adjustable 0-90 degree, 31.8mm clamp
GRIPS_	Comfortable gel grips with padding
SADDLE_	Selle Italia S5 Superflow
SEATPOST_	Promax SP-726, 31.6mm diameter
FENDERS_	Alloy extruded fenders, front & rear 3/4 length, stainless steel hardware
HEADLIGHT_	Lezyne eBike Power E115, 6-12v, 115 lux, with reflector
TAILLIGHT_	Herrmans H-Cargo, 6-12v, with reflector
REAR CARRIER_	Tubular aluminium carrier, with Snapit platform and spring clamp, H-Cargo rear light mount
ACCESSORIES_	Adjustable kickstand, Chainguard

11
SPEED

75^{MM}
FORK TRAVEL

85^{Nm}
TORQUE

630^{WH}
BATTERY

E - SYSTEM

_Powerful Shimano EP600 motor with long lasting Darfon 630Wh battery.

TIRES

_On the safe side with the Maxxis Metropass.

SUSPENSION

_Comfort and traction thanks to Suntour Mobie Air front fork.



TR 1.3

SIZES_	S (47cm), M (52cm), L (56cm), XL (60cm)
COLOR(S)_	Metallic umbra
FRAME_	BESV TR 1.Series alloy frame, Shimano Steps and internal battery compatible
DRIVE UNIT_	Shimano EP600 center-motor, 250W rated power, 85Nm of torque, 25km/h maximum assist
BATTERY_	630Wh integrated Lithium Ion battery, approved for Shimano Service Program, with Smart 4-5.6A charger
DISPLAY_	Shimano SC-E5003, left hand mounted, with LCD display
FORK_	SR Suntour Mobie A32, Lockout, Coil damping, tapered alloy steerer, travel 75mm, Thru-axle
CRANKSET_	Samox for Shimano Steps, 38T chainring
BOTTOM BRACKET_	Shimano, integrated in motor
PEDALS_	Wellgo pedals with reflectors
REAR DERAILLEUR_	Microshift XLE, 10 speed
SHIFTERS_	Microshift XLE, 10 speed
CASSETTE_	Microshift XLE, 10 speed, 11-42T
CHAIN_	KMC e10Sport, with Quick-Link
WHEELSET_	Shimano HB-MT400 front hub, Formula CL-3248 rear hub, 700c multichamber alloy rims 36H
TIRES_	Maxxis Metropass, 700x50c, Silkworm, 60 TPI wire bead with puncture protection, with reflective stripe
BRAKESET_	Shimano MT410, 2-piston hydraulic disc, with 180mm front and rear rotors
BRAKE LEVERS_	Shimano MT402, 3 finger lever
HEADSET_	Acros, AZX-585, 1.5" headset, angular contact bearings, integrated cable routing
HANDLEBAR_	Alloy City-Trekking rise bar, 6066 alloy, 40mm rise, sweep: 20 degree up, 31.8mm clamp
STEM_	3D Forged alloy Trekking stem, adjustable 0-90 degree, 31.8mm clamp
GRIPS_	Comfortable gel grips with padding
SADDLE_	Selle Italia S5 Superflow
SEATPOST_	Promax SP-726, 31.6mm diameter
FENDERS_	Alloy extruded fenders, front & rear 3/4 length, stainless steel hardware
HEADLIGHT_	Lezyne eBike Mini E65, 6-12v, 65 lux, with reflector
TAILLIGHT_	Herrmans H-Cargo, 6-12v, with reflector
REAR CARRIER_	Tubular aluminium carrier, with Snapit platform and spring clamp, H-Cargo rear light mount
ACCESSORIES_	Adjustable kickstand, Chainguard

10
SPEED75^{MM}
FORK TRAVEL85^{Nm}
TORQUE630^{WH}
BATTERY

E - SYSTEM

_Powerful Shimano EP600 motor with long lasting Darfon 630Wh battery.

T I R E S

_On the safe side with the Maxxis Metropass.

S T E M

_Adjustable stem with wide adjustment rage will help to find best position behind the handlebar.



TR 1.3 LS

SIZES_	XS (43cm), S (47cm), M (52cm), L (56cm)
COLOR(S)_	Metallic umbra
FRAME_	BESV TR 1.Series alloy frame, Shimano Steps and internal battery compatible
DRIVE UNIT_	Shimano EP600 center-motor, 250W rated power, 85Nm of torque, 25km/h maximum assist
BATTERY_	630Wh integrated Lithium Ion battery, approved for Shimano Service Program, with Smart 4-5.6A charger
DISPLAY_	Shimano SC-E5003, left hand mounted, with LCD display
FORK_	SR Suntour Mobie A32, Lockout, Coil damping, tapered alloy steerer, travel 75mm, Thru-axle
CRANKSET_	Samox for Shimano Steps, 38T chainring
BOTTOM BRACKET_	Shimano, integrated in motor
PEDALS_	Wellgo pedals with reflectors
REAR DERAILLEUR_	Microshift XLE, 10 speed
SHIFTERS_	Microshift XLE, 10 speed
CASSETTE_	Microshift XLE, 10 speed, 11-42T
CHAIN_	KMC e10Sport, with Quick-Link
WHEELSET_	Shimano HB-MT400 front hub, Formula CL-3248 rear hub, 700c multichamber alloy rims 36H
TIRES_	Maxxis Metropass, 700x50c, Silkworm, 60 TPI wire bead with puncture protection, with reflective stripe
BRAKESET_	Shimano MT410, 2-piston hydraulic disc, with 180mm front and rear rotors
BRAKE LEVERS_	Shimano MT402, 3 finger lever
HEADSET_	Acros, AZX-585, 1.5" headset, angular contact bearings, integrated cable routing
HANDLEBAR_	Alloy City-Trekking rise bar, 6066 alloy, 40mm rise, sweep: 20 degree up, 31.8mm clamp
STEM_	3D Forged alloy Trekking stem, adjustable 0-90 degree, 31.8mm clamp
GRIPS_	Comfortable gel grips with padding
SADDLE_	Selle Italia S5 Superflow
SEATPOST_	Promax SP-726, 31.6mm diameter
FENDERS_	Alloy extruded fenders, front & rear 3/4 length, stainless steel hardware
HEADLIGHT_	Lezyne eBike Mini E65, 6-12v, 65 lux, with reflector
TAILLIGHT_	Herrmans H-Cargo, 6-12v, with reflector
REAR CARRIER_	Tubular aluminium carrier, with Snapit platform and spring clamp, H-Cargo rear light mount
ACCESSORIES_	Adjustable kickstand, Chainguard

10
SPEED75^{MM}
FORK TRAVEL85^{Nm}
TORQUE630^{WH}
BATTERY

E - SYSTEM

_Powerful Shimano EP600 motor with long lasting Darfon 630Wh battery.

S A F E T Y

_Powerful lights from Lezyne and Herrmans keeps you safe when riding.

S U S P E N S I O N

_Nice and plush Mobie fork with 75mm of travel smooth out the road.

TR 2.1

SIZES_ M (50cm), L (55cm), XL (60cm)

COLOR(S)_ Night black

FRAME_ BESV TR 2.Series alloy frame, Shimano Steps and internal battery compatible

DRIVE UNIT_ Shimano EP600 center-motor, 250W rated power, 85Nm of torque, 25km/h maximum assist

BATTERY_ 504Wh integrated Lithium Ion battery, approved for Shimano Service Program, with Smart 2A charger

DISPLAY_ Shimano SC-E5003, left hand mounted, with LCD display

FORK_ SR Suntour Nex-E25, Lockout, Coil damping, tapered alloy steerer, travel 50mm, QR-axle

CRANKSET_ Samox for Shimano Steps, 38T chainring

BOTTOM BRACKET_ Shimano, integrated in motor

PEDALS_ Wellgo pedals with reflectors

REAR DERAILLEUR_ Microshift MARVO LT, 9 speed

SHIFTERS_ Microshift MARVO LT, 9 speed

CASSETTE_ Microshift MARVO LT, 9 speed, 11-36T

CHAIN_ KMC e9Sport, with Quick-Link

WHEELSET_ Shimano TX505 front hub, Formula CL-1422 rear hub, 700c multichamber alloy rims 36H

TIRES_ Maxxis Overdrive, 47x622, Silkshield, 60 TPI wire bead with puncture protection, with reflective stripe

BRAKESET_ Hydraulic disc brake, 2-piston, 180mm front and rear rotors

BRAKE LEVERS_ 2 finger hydraulic disc brake lever

HEADSET_ First, D346S, 1.5" headset, angular contact bearings

HANDLEBAR_ Alloy City-Trekking rise bar, 6066 alloy, 40mm rise, sweep: 20 degree up, 31.8mm clamp

STEM_ 3D Forged alloy City-Trekking stem, adjustable 0-90 degree, 31.8mm clamp

GRIPS_ Comfortable gel grips with padding

SADDLE_ Selle Royal Rio Moderate

SEATPOST_ Promax SP-726, 31.6mm diameter

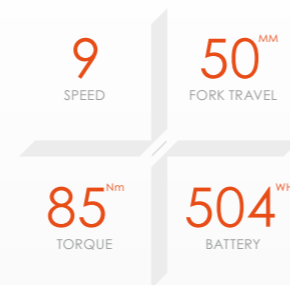
FENDERS_ Alloy extruded fenders, front & rear 3/4 length, stainless steel hardware

HEADLIGHT_ Lezyne eBike Mini E65, 6-12v, 65 lux, with reflector

TAILLIGHT_ Herrmans H-Cargo, 6-12v, with reflector

REAR CARRIER_ Tubular aluminium carrier, with Snapit platform and spring clamp, H-Cargo rear light mount

ACCESSORIES_ Adjustable kickstand, Chainguard



MOTOR

_Powerful EP600 engine from Shimano is delivering up to 85Nm of torque.

TIRES

_On the safe side with the Maxxis Overdrive.

BRAKES

_Hydraulic disc brake with 180mm rotors.

TR 2.1 LS

SIZES_ S (45cm), M (50cm), L (55cm)

COLOR(S)_ Night black

FRAME_ BESV TR 2.Series alloy frame, Shimano Steps and internal battery compatible

DRIVE UNIT_ Shimano EP600 center-motor, 250W rated power, 85Nm of torque, 25km/h maximum assist

BATTERY_ 504Wh integrated Lithium Ion battery, approved for Shimano Service Program, with Smart 2A charger

DISPLAY_ Shimano SC-E5003, left hand mounted, with LCD display

FORK_ SR Suntour Nex-E25, Lockout, Coil damping, tapered alloy steerer, travel 50mm, QR-axle

CRANKSET_ Samox for Shimano Steps, 38T chainring

BOTTOM BRACKET_ Shimano, integrated in motor

PEDALS_ Wellgo pedals with reflectors

REAR DERAILLEUR_ Microshift MARVO LT, 9 speed

SHIFTERS_ Microshift MARVO LT, 9 speed

CASSETTE_ Microshift MARVO LT, 9 speed, 11-36T

CHAIN_ KMC e9Sport, with Quick-Link

WHEELSET_ Shimano TX505 front hub, Formula CL-1422 rear hub, 700c multichamber alloy rims 36H

TIRES_ Maxxis Overdrive, 47x622, Silkshield, 60 TPI wire bead with puncture protection, with reflective stripe

BRAKESET_ Hydraulic disc brake, 2-piston, 180mm front and rear rotors

BRAKE LEVERS_ 2 finger hydraulic disc brake lever

HEADSET_ First, D346S, 1.5" headset, angular contact bearings

HANDLEBAR_ Alloy City-Trekking rise bar, 6066 alloy, 40mm rise, sweep: 20 degree up, 31.8mm clamp

STEM_ 3D Forged alloy City-Trekking stem, adjustable 0-90 degree, 31.8mm clamp

GRIPS_ Comfortable gel grips with padding

SADDLE_ Selle Royal Rio Moderate

SEATPOST_ Promax SP-726, 31.6mm diameter

FENDERS_ Alloy extruded fenders, front & rear 3/4 length, stainless steel hardware

HEADLIGHT_ Lezyne eBike Mini E65, 6-12v, 65 lux, with reflector

TAILLIGHT_ Herrmans H-Cargo, 6-12v, with reflector

REAR CARRIER_ Tubular aluminium carrier, with Snapit platform and spring clamp, H-Cargo rear light mount

ACCESSORIES_ Adjustable kickstand, Chainguard



MOTOR

_Powerful EP600 engine from Shimano is delivering up to 85Nm of torque.

STEM

_Adjustable stem with wide adjustment range will help to find best position behind the handlebar.

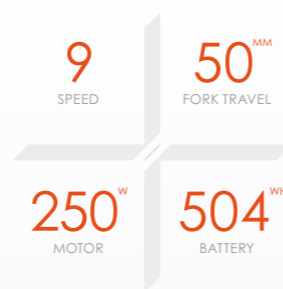
CARRIER

_With Snapit platform from Racktime you can attach many bags and accessories to the carrier platform.



TRILE

SIZES_	L (55cm), XL (60cm)
COLOR_	Black
FRAME_	BESV premium alloy frame with down tube for integrated Darfon battery, for rear hub motor, tapered 1 1/8" - 1.5" head tube, post disc mount, cold-forged dropout and replaceable hanger
DRIVE UNIT_	Bafang rear hub motor for disc brakes, 36V 250W, 6 PCS magnets sensor inside
BATTERY_	504Wh integrated Lithium Ion battery, with Smart 2A charger
DISPLAY_	Darfon display
FORK_	RST Volant, Lockout, Coil damping, tapered alloy steerer, travel 50mm, QR-axle
CRANKSET_	BESV, 38T chainring
BOTTOM BRACKET_	Bafang bottom bracket with revolution per minute (RPM) sensor
PEDALS_	Wellgo C316DU with reflectors
REAR DERAILLEUR_	Microshift MARVO LT, 9 speed
SHIFTERS_	Microshift MARVO LT, 9 speed
CASSETTE_	Microshift MARVO LT, 9 speed, 11-36T
CHAIN_	KMC HG53, 9-speed
WHEELSET_	Shimano HB-TX505 front for Center Lock disc brakes, Bafang hub motor for 6 bolt disc brakes, straight stainless steel spokes, 700c multichamber alloy rims for disc brakes with 36H
TIRES_	Schwalbe Energizer Plus, 700x47c, Green Guard, 67 EPI wire bead, with reflective stripe
BRAKESET_	Shimano MT200, 2-piston hydraulic disc, with 180mm front and 160mm rear rotors
BRAKE LEVERS_	Shimano MT201
HEADSET_	First Components, 1 1/8" - 1.5" headset, retainer bearings
HANDLEBAR_	Alloy City-Trekking riser bar, 6066 alloy, 40mm rise, sweep: 20 degree up, 31.8mm clamp, width in man version: S/M: 700mm, L/XL: 720mm / width in lady version: S: 680mm, M/L: 700mm
STEM_	3D Forged alloy Trekking stem, high-rise 30 degree, 31.8mm clamp, integrated cable routing, width in man version: M: 90mm, L/XL: 110mm / width in lady version: 90mm
GRIPS_	Comfortable gel grips with padding
SADDLE_	Comfortable saddle with D1 padding
SEATPOST_	Alloy micro-adjust, 31.6mm diameter, 0mm offset
FENDERS_	Alloy extruded fenders, front & rear 3/4 length, stainless steel hardware
HEADLIGHT_	Herrmans MR GO E-Bike, 120 Lumens, 6-12v, with reflector, crown mounted
TAILLIGHT_	Herrmans H-Cargo, 6-12v, with reflector
REAR CARRIER_	Tubular aluminium carrier, with platform and spring clamp, rear light mount
ACCESSORIES_	Adjustable kickstand, chainguard



MOTOR

_Efficient rear hub motor with long lasting Darfon 504Wh battery.

TIRES

_On the safe side with the Schwalbe Energizer Performance Plus.

BRAKES

_Hydraulic disc brake with 180/160mm rotors.



TRILE LS

SIZES_	S (45cm), M (50cm), L (55cm)
COLOR_	White
FRAME_	BESV premium alloy frame with down tube for integrated Darfon battery, for rear hub motor, tapered 1 1/8" - 1.5" head tube, post disc mount, cold-forged dropout and replaceable hanger
DRIVE UNIT_	Bafang rear hub motor for disc brakes, 36V 250W, 6 PCS magnets sensor inside
BATTERY_	504Wh integrated Lithium Ion battery, with Smart 2A charger
DISPLAY_	Darfon display
FORK_	RST Volant, Lockout, Coil damping, tapered alloy steerer, travel 50mm, QR-axle
CRANKSET_	BESV, 38T chainring
BOTTOM BRACKET_	Bafang bottom bracket with revolution per minute (RPM) sensor
PEDALS_	Wellgo C316DU with reflectors
REAR DERAILLEUR_	Microshift MARVO LT, 9 speed
SHIFTERS_	Microshift MARVO LT, 9 speed
CASSETTE_	Microshift MARVO LT, 9 speed, 11-36T
CHAIN_	KMC HG53, 9-speed
WHEELSET_	Shimano HB-TX505 front for Center Lock disc brakes, Bafang hub motor for 6 bolt disc brakes, straight stainless steel spokes, 700c multichamber alloy rims for disc brakes with 36H
TIRES_	Schwalbe Energizer Plus, 700x47c, Green Guard, 67 EPI wire bead, with reflective stripe
BRAKESET_	Shimano MT200, 2-piston hydraulic disc, with 180mm front and 160mm rear rotors
BRAKE LEVERS_	Shimano MT201
HEADSET_	First Components, 1 1/8" - 1.5" headset, retainer bearings
HANDLEBAR_	Alloy City-Trekking riser bar, 6066 alloy, 40mm rise, sweep: 20 degree up, 31.8mm clamp, width in man version: S/M: 700mm, L/XL: 720mm / width in lady version: S: 680mm, M/L: 700mm
STEM_	3D Forged alloy Trekking stem, high-rise 30 degree, 31.8mm clamp, integrated cable routing, width in man version: M: 90mm, L/XL: 110mm / width in lady version: 90mm
GRIPS_	Comfortable gel grips with padding
SADDLE_	Comfortable saddle with D1 padding
SEATPOST_	Alloy micro-adjust, 31.6mm diameter, 0mm offset
FENDERS_	Alloy extruded fenders, front & rear 3/4 length, stainless steel hardware
HEADLIGHT_	Herrmans MR GO E-Bike, 120 Lumens, 6-12v, with reflector, crown mounted
TAILLIGHT_	Herrmans H-Cargo, 6-12v, with reflector
REAR CARRIER_	Tubular aluminium carrier, with platform and spring clamp, rear light mount
ACCESSORIES_	Adjustable kickstand, chainguard



MOTOR

_Efficient rear hub motor with long lasting Darfon 504Wh battery.

TIRES

_On the safe side with the Schwalbe Energizer Performance Plus.

BRAKES

_Hydraulic disc brake with 180/160mm rotors.



DUAL SUSPENSION E - M T B

With two different frame groups we offer full suspension e-mtb's from recreational to high performance levels.

Our full carbon frames are developed with nothing else in mind than performance.

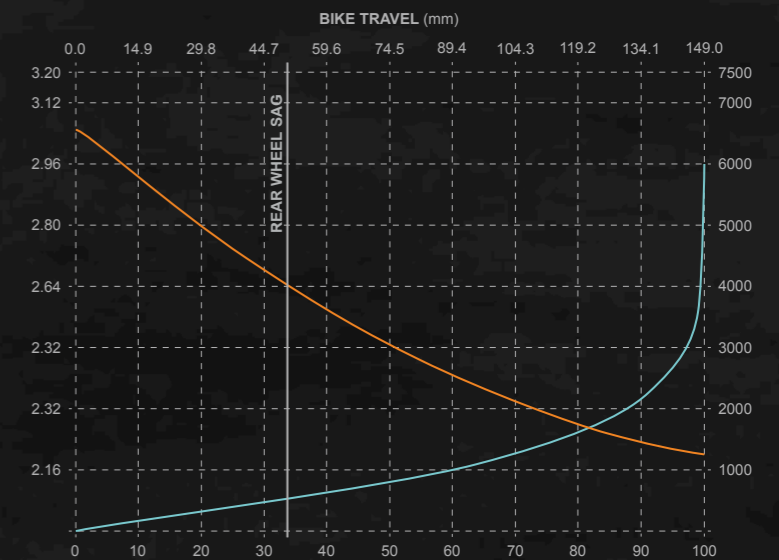
We have worked with our highly experienced team of engineers and designers to develop these frames and fitted them with high-end performance parts, big capacity batteries and the most powerful Shimano motor.

If you are looking for a professional e-mtb capable to enter competitions, this is it.

Our aluminum frames are all equipped with quality parts similar as our carbon ones. These bikes will suit a large group of rider-types as it offers you up to 160mm of travel in the front and 150mm in the back, making it capable of taking on any terrain. We have designed these bikes to offer superb performance on and off the trails.

They look good, ride good and offer great fun.

We decided to use a 4-bar „Horst Link” suspension system due to its high durability and precise control on suspension performance. It keeps the same characteristics during climbing, descending or braking. We were able to optimize the suspension characteristics in both the 150mm and 130mm versions.





TCE 1.1

SIZES_	S (41.5cm), M (43cm), L (46cm)
COLOR(S)_	Shadow black with night black
FRAME_	Dual-suspension BESV TCE Series frame, carbon front and rear triangle, Shimano Steps and internal battery compatible
DRIVE UNIT_	Shimano EP801 center-motor, 250W rated power, 85Nm of torque, 25km/h maximum assist
BATTERY_	720Wh integrated Lithium Ion battery, approved for Shimano Service Program, with Smart 4-5.6A charger
DISPLAY_	Shimano SC-EM800, center mounted, with LCD display, Bluetooth and ANT private connectivity, left hand switch
FORK_	Fox 38 Ebike Performance Elite Float, 38mm stanchions, Air damping, 1.1/8"-1.5" tapered alloy steerer, travel 160mm
REAR SHOCK_	Fox Performance Elite Float X, 205x60, air spring, 150mm rear wheel travel
CRANKSET_	Shimano FC-EM8150 for Shimano EP801, Shimano CRE80 34T chainring
BOTTOM BRACKET_	Shimano, integrated in motor
PEDALS_	Wellgo, alloy body, ball bearings
REAR DERAILLEUR_	Shimano Deore XT RD-M8100, 12 speed
SHIFTERS_	Shimano Deore XT SL-M8100, 12 speed
CASSETTE_	Shimano SLX CS-M7100, 12 speed, 10-51T
CHAIN_	KMC e12Turbo, with Quick-Link
WHEELSET_	Race Face Aeffect-R, eMTB wheelset, front: 29"/ rear: 27.5+, Boost hubs spacing, Race Face multichamber alloy rims 32H
TIRES_	Maxxis Minion DHF, 29"x2.5" / Minion DHR II, 27"x2.6", 3C Maxxterra Compound, EXO+ Protection, Tubeless, 120 TPI foldable
BRAKESET_	Shimano Deore XT M8120, 4-piston hydraulic disc, with 203mm front and rear rotors
BRAKE LEVERS_	Shimano Deore XT M8100, 2 finger lever
HEADSET_	Acros, AZX-581, 1.5" headset, angular contact bearings, integrated cable routing
HANDLEBAR_	E-MTB reis bar, 6066 alloy, 15mm rise, sweep: 7 degree back, 35mm clamp
STEM_	E-MTB 3D Forged alloy stem, 35mm clamp, for internal cable routing
GRIPS_	Race Face Half-Nelson
SADDLE_	Selle Italia Model-X Superflow eBike
SEATPOST_	Fox Transfer Performance Elite dropper post with remote lever, travel: 175mm, 30.9mm diameter, 0mm offset

12
SPEED

160^{MM}
SUSPENSION
TRAVEL

85^{Nm}
TORQUE

720^{WH}
BATTERY

FRAME

_Fully carbon front and rear triangle of frame together designed with excellent kinematic around 160mm and 150mm of travel and mullet wheel size set-up.

SUSPENSION

_Custom-tune pure Fox Performance Elite suspension line with 160mm front and 150mm rear wheel travel.

DRIVETRAIN

_High-performance Shimano XT with 12-speed SLX cassette.



TCE 1.3

SIZES_	S (41.5cm), M (43cm), L (46cm)
COLOR(S)_	Bright desert sands with dark desert sands
FRAME_	Dual-suspension BESV TCE Series frame, carbon front and rear triangle, Shimano Steps and internal battery compatible
DRIVE UNIT_	Shimano EP801 center-motor, 250W rated power, 85Nm of torque, 25km/h maximum assist
BATTERY_	720Wh integrated Lithium Ion battery, approved for Shimano Service Program, with Smart 4-5.6A charger
DISPLAY_	Shimano SC-EM800, center mounted, with LCD display, Bluetooth and ANT private connectivity, left hand switch
FORK_	Fox 38 Ebike Performance Float, 38mm stanchions, Air damping, 1.1/8"-1.5" tapered alloy steerer, travel 160mm
REAR SHOCK_	Fox Performance Float X, 205x60, air spring, 150mm rear wheel travel
CRANKSET_	Shimano FC-EM600 for Shimano EP801, Shimano CRE80 34T chainring
BOTTOM BRACKET_	Shimano, integrated in motor
PEDALS_	Wellgo, alloy body, ball bearings, with pins
REAR DERAILLEUR_	Shimano SLX RD-M7100, 12 speed
SHIFTERS_	Shimano SLX SL-M7100, 12 speed
CASSETTE_	Shimano Deore CS-M6100, 12 speed, 10-51T
CHAIN_	KMC e12Turbo, with Quick-Link
WHEELSET_	Race Face Aeffect-R, eMTB wheelset, front: 29"/ rear: 27.5+, Boost hubs spacing, Race Face multichamber alloy rims 32H
TIRES_	Maxxis Minion DHF, 29"x2.5" / Minion DHR II, 27"x2.6", 3C Maxxterra Compound, EXO+ Protection, Tubeless, 120 TPI foldable
BRAKESET_	Shimano SLX M7120, 4-piston hydraulic disc, with 203mm front and rear rotors
BRAKE LEVERS_	Shimano SLX M7100, 2 finger lever
HEADSET_	Acros, AZX-581, 1.5" headset, angular contact bearings, integrated cable routing
HANDLEBAR_	E-MTB reis bar, 6066 alloy, 15mm rise, sweep: 7 degree back, 35mm clamp
STEM_	E-MTB 3D Forged alloy stem, 35mm clamp, for internal cable routing
GRIPS_	Race Face Half-Nelson
SADDLE_	Selle Italia Model-X Superflow eBike
SEATPOST_	Kind Shock LEV-SI dropper post with remote lever, travel: 175mm, 30.9mm diameter, 0mm offset

12
SPEED

160^{MM}
SUSPENSION
TRAVEL

85^{Nm}
TORQUE

720^{WH}
BATTERY

E - SYSTEM

_Powerful and light Shimano EP801 motor with long lasting Darfon 720Wh battery.

WHEELS

_Mullet set up of Race Face Aeffect-R wheels with Maxxis Minion tires offers supreme control and traction.

BRAKES

_4-piston brakes from Shimano SLX offers tons of stopping power.



TCE 1.5

SIZES_	S (41.5cm), M (43cm), L (46cm)
COLOR(S)_	Bright slate grey with dark slate grey
FRAME_	Dual-suspension BESV TCE Series frame, carbon front and rear triangle, Shimano Steps and internal battery compatible
DRIVE UNIT_	Shimano EP801 center-motor, 250W rated power, 85Nm of torque, 25km/h maximum assist
BATTERY_	630Wh integrated Lithium Ion battery, approved for Shimano Service Program, with Smart 4-5.6A charger
DISPLAY_	Shimano SC-EM800, center mounted, with LCD display, Bluetooth and ANT private connectivity, left hand switch
FORK_	Fox 36 Ebike Rhythm Float, 36mm stanchions, Air damping, 1.1/8"-1.5" tapered alloy steerer, travel 160mm
REAR SHOCK_	Fox Performance Float X, 205x60, air spring, 150mm rear wheel travel
CRANKSET_	Shimano FC-EM600 for Shimano EP801, FSA 34T chainring
BOTTOM BRACKET_	Shimano, integrated in motor
PEDALS_	Wellgo, alloy body, ball bearings, with pins
REAR DERAILLEUR_	Shimano Deore RD-M6100, 12 speed
SHIFTERS_	Shimano Deore SL-M6100, 12 speed
CASSETTE_	Shimano Deore CS-M6100, 12 speed, 10-51T
CHAIN_	KMC e12Turbo, with Quick-Link
WHEELSET_	Formula CL-811 front hub, Formula CL-3248M rear hub, Boost hubs spacing, WTB STi30/STi35 multichamber alloy rims 32H
TIRES_	Maxxis Minion DHF, 29"x2.5" / Minion DHR II, 27"x2.6", 3C Maxxterra Compound, EXO+ Protection, Tubeless, 120 TPI foldable
BRAKESET_	Shimano Deore M6120, 4-piston hydraulic disc, with 203mm front and rear rotors
BRAKE LEVERS_	Shimano Deore M6100, 2 finger lever
HEADSET_	Acros, AZX-581, 1.5" headset, angular contact bearings, integrated cable routing
HANDLEBAR_	E-MTB reis bar, 6066 alloy, 15mm rise, sweep: 7 degree back, 35mm clamp
STEM_	E-MTB 3D Forged alloy stem, 35mm clamp, for internal cable routing
GRIPS_	E-MTB gel grips with padding and BESV clamp
SADDLE_	Selle Italia Model-X Superflow eBike
SEATPOST_	Kind Shock e20i dropper post with remote lever, travel: 170mm, 30.9mm diameter, 0mm offset

12
SPEED

160^{MM}
SUSPENSION
TRAVEL

85^{Nm}
TORQUE

630^{WH}
BATTERY

E - SYSTEM

_Powerful and light Shimano EP801 motor with long lasting Darfon 630Wh battery.

TIRES

_Combination of Fox Rhythm and Performance for best value to performance.

DRIVETRAIN

_Durable and precise 12-speed drivetrain from Shimano Deore.





TCA 1.1

SIZES_	Man: S (41.5cm), M (43cm), L (46cm)
COLOR(S)_	River blue with night black
FRAME_	Dual-suspension BESV TCA Series frame, carbon front and rear triangle, Shimano Steps and internal battery compatible
DRIVE UNIT_	Shimano EP801 center-motor, 250W rated power, 85Nm of torque, 25km/h maximum assist
BATTERY_	720Wh integrated Lithium Ion battery, approved for Shimano Service Program, with Smart 4-5.6A charger
DISPLAY_	Shimano SC-EM800, center mounted, with LCD display, Bluetooth and ANT private connectivity, left hand switch
FORK_	Rock Shox Revelation, 35mm stanchions, Debon Air with Motion Control, 1.1/8"-1.8" tapered alloy steerer, travel 140mm, Maxle Lite
REAR SHOCK_	Rock Shox Delux Select, DebonAir, 185x50
CRANKSET_	Shimano FC-EM600 for Shimano EP801, Shimano CRE80 34T chainring
BOTTOM BRACKET_	Shimano, integrated in motor
PEDALS_	Wellgo, alloy body, ball bearings, with pins
REAR DERAILLEUR_	Shimano SLX RD-M7100, 12 speed
SHIFTERS_	Shimano SLX SL-M7100, 12 speed
CASSETTE_	Shimano Deore CS-M6100, 12 speed, 10-51T
CHAIN_	KMC e12Turbo, with Quick-Link
WHEELSET_	Race Face Aeffect-R, eMTB wheelset 29", Boost hubs spacing, Race Face multichamber alloy rims 32H
TIRES_	Maxxis Minion DHF, 29"x2.5" / Assegai, 29"x2.5", 3C Maxxterra Compound, EXO+ Protection, Tubeless, 120 TPI foldable
BRAKESET_	Shimano SLX M7120, 4-piston hydraulic disc, with 203mm front and rear rotors
BRAKE LEVERS_	Shimano SLX M7100, 2 finger lever
HEADSET_	Acros, AZX-581, 1.5" headset, angular contact bearings, integrated cable routing
HANDLEBAR_	E-MTB reis bar, 6066 alloy, 15mm rise, sweep: 7 degree back, 35mm clamp
STEM_	E-MTB 3D Forged alloy stem, 35mm clamp, for internal cable routing
GRIPS_	Race Face Half-Nelson
SADDLE_	Selle Italia Model-X Superflow eBike
SEATPOST_	Kind Shock e20i dropper post with remote lever, travel: 170mm, 30.9mm diameter, 0mm offset

12

SPEED

140^{MM}

SUSPENSION TRAVEL

85^{Nm}

TORQUE

720^{WH}

BATTERY

FRAME

_Fully carbon front and rear triangle of frame together designed with excellent kinematic around 140mm and 130mm of travel and 29" wheel size set-up.

WHEELS

_29" set up of Race Face Aeffect-R wheels with Maxxis tires offers supreme control and traction.

SUSPENSION

_Great suspension from Rock Shox with 140mm front and 130mm rear wheel travel.



TCA 1.3

SIZES_	Man: S (41.5cm), M (43cm), L (46cm)
COLOR(S)_	Bright ceramic green with dark ceramic green
FRAME_	Dual-suspension BESV TCA Series frame, carbon front and rear triangle, Shimano Steps and internal battery compatible
DRIVE UNIT_	Shimano EP801 center-motor, 250W rated power, 85Nm of torque, 25km/h maximum assist
BATTERY_	630Wh integrated Lithium Ion battery, approved for Shimano Service Program, with Smart 4-5.6A charger
DISPLAY_	Shimano SC-EM800, center mounted, with LCD display, Bluetooth and ANT private connectivity, left hand switch
FORK_	Rock Shox 35 Silver TK, 36mm stanchions, Solo Air, 1.1/8"-1.8" tapered alloy steerer, travel 140mm
REAR SHOCK_	Rock Shox Delux Select, DebonAir, 185x50
CRANKSET_	Shimano FC-EM600 for Shimano EP801, FSA 34T chainring
BOTTOM BRACKET_	Shimano, integrated in motor
PEDALS_	Wellgo, alloy body, ball bearings, with pins
REAR DERAILLEUR_	Shimano Deore RD-M6100, 12 speed
SHIFTERS_	Shimano Deore SL-M6100, 12 speed
CASSETTE_	Shimano Deore CS-M6100, 12 speed, 10-51T
CHAIN_	KMC e12Turbo, with Quick-Link
WHEELSET_	Formula CL-811 front hub, Formula CL-3248M rear hub, Boost hubs spacing, WTB STI30 multichamber alloy rims 32H
TIRES_	Maxxis Minion DHF, 29"x2.5" / Assegai, 29"x2.5", 3C Maxxterra Compound, EXO+ Protection, Tubeless, 120 TPI foldable
BRAKESET_	Shimano Deore M6120, 4-piston hydraulic disc, with 203mm front and rear rotors
BRAKE LEVERS_	Shimano Deore M6100, 2 finger lever
HEADSET_	Acros, AZX-581, 1.5" headset, angular contact bearings, integrated cable routing
HANDLEBAR_	E-MTB reis bar, 6066 alloy, 15mm rise, sweep: 7 degree back, 35mm clamp
STEM_	E-MTB 3D Forged alloy stem, 35mm clamp, for internal cable routing
GRIPS_	Race Face Half-Nelson
SADDLE_	Selle Italia Model-X Superflow eBike
SEATPOST_	Kind Shock e20i dropper post with remote lever, travel: 170mm, 30.9mm diameter, 0mm offset

12

SPEED

140^{MM}

SUSPENSION TRAVEL

85^{Nm}

TORQUE

630^{WH}

BATTERY

E - SYSTEM

_Powerful and light Shimano EP801 motor with long lasting Darfon 630Wh battery.

TIRES

_Extreme well handling and control with super fast Maxxis tires.

BRAKES

_4-piston brakes from Shimano Deore offers tons of stopping power.



TRS 160 1.1 LE

SIZES_	S (42.5cm), M (46cm), L (49cm)
COLOR(S)_	Forest green with night black
FRAME_	Dual-suspension BESV TRS Series alloy frame, Shimano Steps and internal battery compatible
DRIVE UNIT_	Shimano EP801 center-motor, 250W rated power, 85Nm of torque, 25km/h maximum assist
BATTERY_	720Wh integrated Lithium Ion battery, approved for Shimano Service Program, with Smart 4-5.6A charger
DISPLAY_	Shimano SC-EM800, center mounted, LCD display, Bluetooth and ANT private connectivity, left hand switch
FORK_	Fox 36 Ebike Rhythm Float, 36mm stanchions, Air damping, 1.1/8"-1.5" tapered alloy steerer, travel 160mm
REAR SHOCK_	Fox Performance Float DPS, 230x65, air spring, 160mm rear wheel travel
CRANKSET_	Samox for Shimano Steps, 34T chainring
BOTTOM BRACKET_	Shimano, integrated in motor
PEDALS_	Wellgo, alloy body, ball bearings
REAR DERAILLEUR_	Shimano Deore XT RD-M8100, 12 speed
SHIFTERS_	Shimano Deore SL-M6100, 12 speed
CASSETTE_	Shimano Deore CS-M6100, 12 speed, 10-51T
CHAIN_	KMC e12Turbo, with Quick-Link
WHEELSET_	Formula CL-811 front hub, Formula CL-3248M rear hub, Boost hubs spacing, WTB STI30 29" multichamber alloy rims 32H
TIRES_	Maxxis Minion DHF / Minion DHR II, 29"x2.6", Normal Compound, EXO, Tubeless, 60 TPI foldable, Tanwall sides
BRAKES_	Shimano Deore M6120, 4-piston hydraulic disc, with 203mm front and rear rotors
BRAKE LEVERS_	Shimano Deore M6100, 2 finger lever
HEADSET_	Acros, AZX-581, 1.8" headset, angular contact bearings, integrated cable routing
HANDLEBAR_	E-MTB reis bar, 6066 alloy, 15mm rise, sweep: 7 degree back, 35mm clamp
STEM_	E-MTB 3D Forged alloy stem, 35mm clamp, for internal cable routing
GRIPS_	E-MTB gel grips with padding and BESV clamp
SADDLE_	Selle Italia Model-X Superflow eBike
SEATPOST_	Kind Shock LEV-SI dropper post with remote lever, 30.9mm diameter, 0mm offset

12
SPEED

160^{MM}
SUSPENSION
TRAVEL

85^{Nm}
TORQUE

720^{WH}
BATTERY

E - SYSTEM

_Powerful and light Shimano EP801 motor with long lasting Darfon 720Wh battery.

TIRES

_Get your grip with Maxxis Minion tire set in 29"x2.6" size.

SUSPENSION

_Combination of Fox Rhythm and Performance DPS for riding experience in the range.



TRS 160 1.1

SIZES_	S (42.5cm), M (46cm), L (49cm)
COLOR(S)_	Trail khaki with night black
FRAME_	Dual-suspension BESV TRS Series alloy frame, Shimano Steps and internal battery compatible
DRIVE UNIT_	Shimano EP801 center-motor, 250W rated power, 85Nm of torque, 25km/h maximum assist
BATTERY_	720Wh integrated Lithium Ion battery, approved for Shimano Service Program, with Smart 4-5.6A charger
DISPLAY_	Shimano SC-E5003, left hand mounted, with LCD display
FORK_	SR Suntour Durlox36, 36mm stanchions, Air damping, 1.1/8"-1.8" tapered alloy steerer, travel 160mm
REAR SHOCK_	SR Suntour Edge LOR8, 230x65, air spring, 160mm rear wheel travel
CRANKSET_	Samox for Shimano Steps, 34T chainring
BOTTOM BRACKET_	Shimano, integrated in motor
PEDALS_	Wellgo, alloy body, ball bearings
REAR DERAILLEUR_	Shimano Deore XT RD-M8100, 12 speed
SHIFTERS_	Shimano Deore SL-M6100, 12 speed
CASSETTE_	Shimano Deore CS-M6100, 12 speed, 10-51T
CHAIN_	KMC e12Turbo, with Quick-Link
WHEELSET_	Formula CL-811 front hub, Formula CL-3248M rear hub, Boost hubs spacing, WTB ST130 29" multichamber alloy rims 32H
TIRES_	Maxxis Minion DHF / Minion DHR II, 29"x2.6", Normal Compound, EXO, Tubeless, 60 TPI foldable, Tanwall sides
BRAKES_	Shimano Deore M6120, 4-piston hydraulic disc, with 203mm front and rear rotors
BRAKE LEVERS_	Shimano Deore M6100, 2 finger lever
HEADSET_	Acros, AZX-581, 1.8" headset, angular contact bearings, integrated cable routing
HANDLEBAR_	E-MTB reis bar, 6066 alloy, 15mm rise, sweep: 7 degree back, 35mm clamp
STEM_	E-MTB 3D Forged alloy stem, 35mm clamp, for internal cable routing
GRIPS_	E-MTB gel grips with padding and BESV clamp
SADDLE_	Selle Italia Model-X Superflow eBike
SEATPOST_	Kind Shock LEV-SI dropper post with remote lever, 30.9mm diameter, 0mm offset

12

SPEED

160^{MM}

SUSPENSION TRAVEL

85^{Nm}

TORQUE

720^{WH}

BATTERY

FRAME

_Alloy frame with very efficient 4-bar suspension system.

TIRES

_Get your grip with Maxxis Minion tire set in 29"x2.6" size.

BRAKES

_4-piston brakes from Shimano Deore offers tons of stopping power.



TRS 1.3

SIZES_	S (42.5cm), M (46cm), L (49cm)
COLOR(S)_	Rock grey with night black
FRAME_	Dual-suspension BESV TRS Series alloy frame, Shimano Steps and internal battery compatible
DRIVE UNIT_	Shimano EP801 center-motor, 250W rated power, 85Nm of torque, 25km/h maximum assist
BATTERY_	630Wh integrated Lithium Ion battery, approved for Shimano Service Program, with Smart 4-5.6A charger
DISPLAY_	Shimano SC-E5003, left hand mounted, with LCD display
FORK_	SR Suntour Durlox36, 36mm stanchions, Air damping, 1.1/8"-1.8" tapered alloy steerer, travel 160mm
REAR SHOCK_	SR Suntour Edge LOR8, 230x65, air spring, 160mm rear wheel travel
CRANKSET_	Samox for Shimano Steps, 34T chainring
BOTTOM BRACKET_	Shimano, integrated in motor
PEDALS_	Wellgo, alloy body, ball bearings
REAR DERAILLEUR_	Shimano Deore RD-M5100, 11 speed
SHIFTERS_	Shimano Deore SL-M5100, 11 speed
CASSETTE_	Shimano Deore CS-M5100, 11 speed, 11-51T
CHAIN_	KMC e11Turbo, with Quick-Link
WHEELSET_	Formula CL-811 front hub, Formula CL-3248 rear hub, Boost hubs spacing, WTB ST130 29" multichamber alloy rims 32H
TIRES_	Maxxis Minion DHF / Minion DHR II, 29"x2.6", Normal Compound, EXO, Tubeless, 60 TPI foldable, Tanwall sides
BRAKES_	Shimano MT420, 4-piston hydraulic disc, with 203mm front and rear rotors
BRAKE LEVERS_	Shimano MT4100, 2 finger lever
HEADSET_	Acros, AZX-581, 1.8" headset, angular contact bearings, integrated cable routing
HANDLEBAR_	E-MTB reis bar, 6066 alloy, 15mm rise, sweep: 7 degree back, 35mm clamp
STEM_	E-MTB 3D Forged alloy stem, 35mm clamp, for internal cable routing
GRIPS_	E-MTB gel grips with padding and BESV clamp
SADDLE_	Selle Italia Model-X Superflow eBike
SEATPOST_	Kind Shock e20i dropper post with remote lever, 30.9mm diameter, 0mm offset

11

SPEED

160^{MM}

SUSPENSION TRAVEL

85^{Nm}

TORQUE

630^{WH}

BATTERY

E - SYSTEM

_Powerful and light Shimano EP801 motor with long lasting Darfon 720Wh battery

SUSPENSION

_Long travel air suspension from Suntour DuroLux and Edge lines.

DRIVETRAIN

_Wide range 11-speed gear combination from Shimano Deore.



TRS 1.5

SIZES_	S (42.5cm), M (46cm), L (49cm)
COLOR(S)_	Steel grey with night black
FRAME_	Dual-suspension BESV TRS Series alloy frame, Shimano Steps and internal battery compatible
DRIVE UNIT_	Shimano EP600 center-motor, 250W rated power, 85Nm of torque, 25km/h maximum assist
BATTERY_	630Wh integrated Lithium Ion battery, approved for Shimano Service Program, with Smart 2A charger
DISPLAY_	Shimano SC-E5003, left hand mounted, with LCD display
FORK_	SR Suntour Zeron35, 35mm stanchions, Lockout, Air damping, 1.1/8"-1.8" tapered alloy steerer, travel 150mm
REAR SHOCK_	SR Suntour Edge LOR8, 230x65, air spring
CRANKSET_	Samox for Shimano Steps, 34T chainring
BOTTOM BRACKET_	Shimano, integrated in motor
PEDALS_	Wellgo, alloy body, ball bearings
REAR DERAILLEUR_	Shimano Deore RD-M5120, 10 speed
SHIFTERS_	Shimano Deore SL-M4100, 10 speed
CASSETTE_	Shimano Deore CS-M4100, 10 speed, 11-46T
CHAIN_	KMC e10Turbo, with Quick-Link
WHEELSET_	Formula CL-811 front hub, Formula CL-3248 rear hub, Boost hubs spacing, WTB ST130 29" multichamber alloy rims 32H
TIRES_	Maxxis Minion DHF / Minion DHR II, 29"x2.6", Normal Compound, EXO, Tubeless, 60 TPI foldable, Tanwall sides
BRAKES_	Shimano MT420/MT410, 4/2-piston hydraulic disc, with 203mm front and rear rotors
BRAKE LEVERS_	Shimano MT4100, 2 finger lever
HEADSET_	Acros, AZX-581, 1.8" headset, angular contact bearings, integrated cable routing
HANDLEBAR_	E-MTB reis bar, 6066 alloy, 15mm rise, sweep: 7 degree back, 35mm clamp
STEM_	E-MTB 3D Forged alloy stem, 35mm clamp, for internal cable routing
GRIPS_	E-MTB gel grips with padding and BESV clamp
SADDLE_	Selle Italia Model-X Superflow eBike
SEATPOST_	Kind Shock e20i dropper post with remote lever, 30.9mm diameter, 0mm offset

10
SPEED

150^{MM}
SUSPENSION
TRAVEL

85^{Nm}
MOTOR

630^{WH}
BATTERY

MOTOR

_Big torque momentum of EP600 engine will boost up your ride.

TIRES

_Get your grip with Maxxis Minion tire set in 29"x2.6" size.

BRAKES

_Huge range of stopping power with Shimano MT400 series brakes in combination with 203mm rotors.





HARDTAIL E - M T B

The hardtail e-mtb's are developed to be perfect companions for cross-country or gravel rides. For the slightly less-confident riders we also offer these models with a low-step style frame. These frames have a little less travel in the front and a little more upright and comfortable riding position as key features. Don't be mistaken, it still has the capabilities of doing the same trails as the step-over frame style. Fitted with some powerful Shimano drivetrains and enough battery capacity, these bikes are ready to take you on many offroad adventures.



TRX 1.1

SIZES_	S (42.5cm), M (46cm), L (49cm)
COLOR(S)_	Trail khaki with night black
FRAME_	Hard-tail BESV TRX Series alloy frame, Shimano Steps and internal battery compatible
DRIVE UNIT_	Shimano EP600 center-motor, 250W rated power, 85Nm of torque, 25km/h maximum assist
BATTERY_	720Wh integrated Lithium Ion battery, approved for Shimano Service Program, with Smart 4-5.6A charger
DISPLAY_	Shimano SC-E5003, left hand mounted, with LCD display
FORK_	SR Suntour XCR34, 34mm stanchions, Lockout, Air damping, 1.1/8"-1.5" tapered alloy steerer, travel 120mm
CRANKSET_	Samox for Shimano Steps, 34T chainring
BOTTOM BRACKET_	Shimano, integrated in motor
PEDALS_	Wellgo, alloy body, ball bearings
REAR DERAILLEUR_	Shimano Deore RD-M6100, 12 speed
SHIFTERS_	Shimano Deore SL-M6100, 12 speed
CASSETTE_	Shimano Deore CS-M6100, 12 speed, 11-51T
CHAIN_	KMC e12Turbo, with Quick-Link
WHEELSET_	Formula CL-811 front hub, Formula CL-3248M rear hub, Boost hubs spacing, WTB ST127 29" multichamber alloy rims 32H
TIRES_	Maxxis Ardent, 29"x2.4", Normal Compound, EXO, 60 TPI foldable, Tanwall sides
BRAKESET_	Shimano MT420/MT410, 4/2-piston hydraulic disc, with 203mm front and 180mm rear rotors
BRAKE LEVERS_	Shimano MT4100, 2 finger lever
HEADSET_	Acros, AZX-581, 1.5" headset, angular contact bearings, integrated cable routing
HANDLEBAR_	E-MTB reis bar, 6066 alloy, 4mm rise, sweep: 7 degree back, 31.8mm clamp
STEM_	E-MTB 3D Forged alloy stem, 31.8mm clamp, for internal cable routing
GRIPS_	E-MTB gel grips with padding and BESV clamp
SADDLE_	Selle Italia Model-X Superflow eBike
SEATPOST_	Promax SP-726, 31.6mm diameter

12

SPEED

120^{MM}

SUSPENSION TRAVEL

85^{Nm}

TORQUE

720^{WH}

BATTERY

E - SYSTEM

_Powerful and light Shimano EP600 motor with long lasting Darfon 720Wh battery.

T I R E S

_Great grip and low rolling resistance of Maxxis Ardent.

B R A K E S

_Hydraulic disc brake with 203mm rotors.



TRX 1.1 LS

SIZES_	XS (43cm), S (47cm), M (52cm), L (56cm)
COLOR(S)_	Trail khaki with night black
FRAME_	Hard-tail BESV TRX Series alloy frame, Shimano Steps and internal battery compatible
DRIVE UNIT_	Shimano EP600 center-motor, 250W rated power, 85Nm of torque, 25km/h maximum assist
BATTERY_	720Wh integrated Lithium Ion battery, approved for Shimano Service Program, with Smart 4-5.6A charger
DISPLAY_	Shimano SC-E5003, left hand mounted, with LCD display
FORK_	SR Suntour XCR34, 34mm stanchions, Lockout, Air damping, 1.1/8"-1.5" tapered alloy steerer, travel 100mm
CRANKSET_	Samox for Shimano Steps, 34T chainring
BOTTOM BRACKET_	Shimano, integrated in motor
PEDALS_	Wellgo, alloy body, ball bearings
REAR DERAILLEUR_	Shimano Deore RD-M6100, 12 speed
SHIFTERS_	Shimano Deore SL-M6100, 12 speed
CASSETTE_	Shimano Deore CS-M6100, 12 speed, 11-51T
CHAIN_	KMC e12Turbo, with Quick-Link
WHEELSET_	Formula CL-811 front hub, Formula CL-3248M rear hub, Boost hubs spacing, WTB ST127 29" multichamber alloy rims 32H
TIRES_	Maxxis Ardent, 29"x2.4", Normal Compound, EXO, 60 TPI foldable, Tanwall sides
BRAKESET_	Shimano MT420/MT410, 4/2-piston hydraulic disc, with 203mm front and 180mm rear rotors
BRAKE LEVERS_	Shimano MT4100, 2 finger lever
HEADSET_	Acros, AZX-581, 1.5" headset, angular contact bearings, integrated cable routing
HANDLEBAR_	E-MTB reis bar, 6066 alloy, 4mm rise, sweep: 7 degree back, 31.8mm clamp
STEM_	E-MTB 3D Forged alloy stem, 31.8mm clamp, for internal cable routing
GRIPS_	E-MTB gel grips with padding and BESV clamp
SADDLE_	Selle Italia Model-X Superflow eBike
SEATPOST_	Promax SP-726, 31.6mm diameter

12

SPEED

120^{MM}

SUSPENSION TRAVEL

85^{Nm}

TORQUE

720^{WH}

BATTERY

E - SYSTEM

_Powerful and light Shimano EP600 motor with long lasting Darfon 720Wh battery.

D R I V E T R A I N

_Durable and precise Shimano Deore with 12-speed gearing.

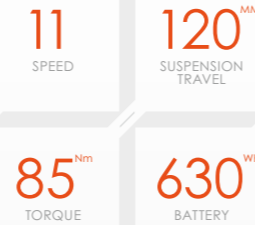
S A D D L E

_Specially designed saddle for eBikes from Selle Italia.



TRX 1.3

SIZES_	S (42.5cm), M (46cm), L (49cm)
COLOR(S)_	Rock grey with night black
FRAME_	Hard-tail BESV TRX Series alloy frame, Shimano Steps and internal battery compatible
DRIVE UNIT_	Shimano EP600 center-motor, 250W rated power, 85Nm of torque, 25km/h maximum assist
BATTERY_	630Wh integrated Lithium Ion battery, approved for Shimano Service Program, with Smart 4-5.6A charger
DISPLAY_	Shimano SC-E5003, left hand mounted, with LCD display
FORK_	SR Suntour XCM34, 34mm stanchions, Lockout, Coil damping, 1.1/8"-1.5" tapered alloy steerer, 120mm travel
CRANKSET_	Samox for Shimano Steps, 34T chainring
BOTTOM BRACKET_	Shimano, integrated in motor
PEDALS_	Wellgo, alloy body, ball bearings
REAR DERAILLEUR_	Microshift XLE 11, 11 speed
SHIFTERS_	Microshift XLE 11, 11 speed
CASSETTE_	Microshift XLE 11, 11 speed, 11-46T
CHAIN_	KMC e11Turbo, with Quick-Link
WHEELSET_	Formula CL-811 front hub, Formula CL-3248 rear hub, Boost hubs spacing, WTB STI27 29" multichamber alloy rims 32H
TIRES_	Maxxis Ardent, 29"x2.4", Normal Compound, EXO, 60 TPI foldable, Tanwall sides
BRAKESET_	Hydraulic disc brake, 2-piston, 180mm front and rear rotors
BRAKE LEVERS_	2 finger hydraulic disc brake lever
HEADSET_	Acros, AZX-581, 1.5" headset, angular contact bearings, integrated cable routing
HANDLEBAR_	E-MTB reis bar, 6066 alloy, 4mm rise, sweep: 7 degree back, 31.8mm clamp
STEM_	E-MTB 3D Forged alloy stem, 31.8mm clamp, for internal cable routing
GRIPS_	E-MTB gel grips with padding and BESV clamp
SADDLE_	Selle Italia X3 eBike
SEATPOST_	Promax SP-726, 31.6mm diameter



E - SYSTEM

_Powerful and light Shimano EP600 motor with long lasting Darfon 630Wh battery.

S U S P E N S I O N

_Smooth ride thanks to Suntour XCM front fork.

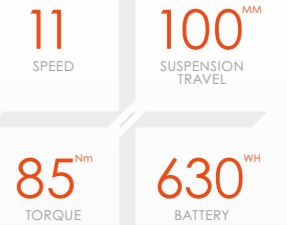
B R A K E S

_Hydraulic disc brake with 180mm rotors.



TRX 1.3 LS

SIZES_	XS (43cm), S (47cm), M (52cm), L (56cm)
COLOR(S)_	Rock grey with night black
FRAME_	Hard-tail BESV TRX Series alloy frame, Shimano Steps and internal battery compatible
DRIVE UNIT_	Shimano EP600 center-motor, 250W rated power, 85Nm of torque, 25km/h maximum assist
BATTERY_	630Wh integrated Lithium Ion battery, approved for Shimano Service Program, with Smart 4-5.6A charger
DISPLAY_	Shimano SC-E5003, left hand mounted, with LCD display
FORK_	SR Suntour XCM34, 34mm stanchions, Lockout, Coil damping, 1.1/8"-1.5" tapered alloy steerer, 100mm travel
CRANKSET_	Samox for Shimano Steps, 34T chainring
BOTTOM BRACKET_	Shimano, integrated in motor
PEDALS_	Wellgo, alloy body, ball bearings
REAR DERAILLEUR_	Microshift XLE 11, 11 speed
SHIFTERS_	Microshift XLE 11, 11 speed
CASSETTE_	Microshift XLE 11, 11 speed, 11-46T
CHAIN_	KMC e11Turbo, with Quick-Link
WHEELSET_	Formula CL-811 front hub, Formula CL-3248 rear hub, Boost hubs spacing, WTB STI27 29" multichamber alloy rims 32H
TIRES_	Maxxis Ardent, 29"x2.4", Normal Compound, EXO, 60 TPI foldable, Tanwall sides
BRAKESET_	Hydraulic disc brake, 2-piston, 180mm front and rear rotors
BRAKE LEVERS_	2 finger hydraulic disc brake lever
HEADSET_	Acros, AZX-581, 1.5" headset, angular contact bearings, integrated cable routing
HANDLEBAR_	E-MTB reis bar, 6066 alloy, 4mm rise, sweep: 7 degree back, 31.8mm clamp
STEM_	E-MTB 3D Forged alloy stem, 31.8mm clamp, for internal cable routing
GRIPS_	E-MTB gel grips with padding and BESV clamp
SADDLE_	Selle Italia X3 eBike
SEATPOST_	Promax SP-726, 31.6mm diameter



E - SYSTEM

_Powerful and light Shimano EP600 motor with long lasting Darfon 630Wh battery.

W H E E L S

_Wide rims from WTB combined with Formula boosted hubs.

S A D D L E

_Specially designed saddle for eBikes from Selle Italia.



TRX 1.5

SIZES_	XS (43cm), S (47cm), M (52cm), L (56cm)
COLOR(S)_	Steel grey with night black
FRAME_	Hard-tail BESV TRX Series alloy frame, Shimano Steps and internal battery compatible
DRIVE UNIT_	Shimano EP600 center-motor, 250W rated power, 85Nm of torque, 25km/h maximum assist
BATTERY_	504Wh integrated Lithium Ion battery, approved for Shimano Service Program, with Smart 2A charger
DISPLAY_	Shimano SC-E5003, left hand mounted, with LCD display
FORK_	SR Suntour XCM34, 34mm stanchions, Lockout, Coil damping, 1.1/8"-1.5" tapered alloy steerer, 120mm travel
CRANKSET_	Samox for Shimano Steps, 34T chainring
BOTTOM BRACKET_	Shimano, integrated in motor
PEDALS_	Wellgo, alloy body, ball bearings
REAR DERAILLEUR_	Microshift XLE, 10 speed
SHIFTERS_	Microshift XLE, 10 speed
CASSETTE_	Microshift XLE, 10 speed, 11-42T
CHAIN_	KMC e10Turbo, with Quick-Link
WHEELSET_	Formula CL-811 front hub, Formula CL-3248 rear hub, Boost hubs spacing, WTB STI27 29" multichamber alloy rims 32H
TIRES_	Maxxis Ardent, 29"x2.4", Normal Compound, EXO, 60 TPI foldable
BRAKESSET_	Hydraulic disc brake, 2-piston, 180mm front and rear rotors
BRAKE LEVERS_	2 finger hydraulic disc brake lever
HEADSET_	Acros, AZX-581, 1.5" headset, angular contact bearings, integrated cable routing
HANDLEBAR_	E-MTB reis bar, 6066 alloy, 4mm rise, sweep: 7 degree back, 31.8mm clamp
STEM_	E-MTB 3D Forged alloy stem, 31.8mm clamp, for internal cable routing
GRIPS_	E-MTB gel grips with padding and BESV clamp
SADDLE_	Selle Italia X3 eBike
SEATPOST_	Promax SP-726, 31.6mm diameter

10
SPEED

120^{MM}
SUSPENSION
TRAVEL

85^{Nm}
TORQUE

504^{WH}
BATTERY

MOTOR

_Big torque momentum of EP600 engine will boost up your ride.

TIRES

_Great grip and low rolling resistance of Maxxis Ardent.

BRAKES

_Hydraulic disc brake with 180mm rotors.



TRX 1.5 LS

SIZES_	XS (43cm), S (47cm), M (52cm), L (56cm)
COLOR(S)_	Steel grey with night black
FRAME_	Hard-tail BESV TRX Series alloy frame, Shimano Steps and internal battery compatible
DRIVE UNIT_	Shimano EP600 center-motor, 250W rated power, 85Nm of torque, 25km/h maximum assist
BATTERY_	504WhWh integrated Lithium Ion battery, approved for Shimano Service Program, with Smart 2A charger
DISPLAY_	Shimano SC-E5003, left hand mounted, with LCD display
FORK_	SR Suntour XCM34, 34mm stanchions, Lockout, Coil damping, 1.1/8"-1.5" tapered alloy steerer, 100mm travel
CRANKSET_	Samox for Shimano Steps, 34T chainring
BOTTOM BRACKET_	Shimano, integrated in motor
PEDALS_	Wellgo, alloy body, ball bearings
REAR DERAILLEUR_	Microshift XLE, 10 speed
SHIFTERS_	Microshift XLE, 10 speed
CASSETTE_	Microshift XLE, 10 speed, 11-42T
CHAIN_	KMC e10Turbo, with Quick-Link
WHEELSET_	Formula CL-811 front hub, Formula CL-3248 rear hub, Boost hubs spacing, WTB STI27 29" multichamber alloy rims 32H
TIRES_	Maxxis Ardent, 29"x2.4", Normal Compound, EXO, 60 TPI foldable
BRAKESSET_	Hydraulic disc brake, 2-piston, 180mm front and rear rotors
BRAKE LEVERS_	2 finger hydraulic disc brake lever
HEADSET_	Acros, AZX-581, 1.5" headset, angular contact bearings, integrated cable routing
HANDLEBAR_	E-MTB reis bar, 6066 alloy, 4mm rise, sweep: 7 degree back, 31.8mm clamp
STEM_	E-MTB 3D Forged alloy stem, 31.8mm clamp, for internal cable routing
GRIPS_	E-MTB gel grips with padding and BESV clamp
SADDLE_	Selle Italia X3 eBike
SEATPOST_	Promax SP-726, 31.6mm diameter

10
SPEED

100^{MM}
SUSPENSION
TRAVEL

85^{Nm}
TORQUE

504^{WH}
BATTERY

MOTOR

_Big torque momentum of EP600 engine will boost up your ride.

SUSPENSION

_Smooth ride thanks to Suntour XCM front fork.

SADDLE

_Specially designed saddle for eBikes from Selle Italia.



U R B A N E B I K E S

Our Urban e-bikes are based on our mtb platforms (both fullsuspension as hardtail) but equipped with fenders, lights and rear carrier to create a super versatile bike. We would actually like to refer to these bikes as two-wheeled SUV's. They can do everything, everywhere and at any time. Take them to commute to work, after work to the forests for some trails and in the evening you fit your panier bags with the Snapit system from Racktime and do groceries. It just doesn't get more versatile!



TR S 1 5 0 U r b a n 1 . 1

SIZES_	Man: S (42.5cm), M (46cm), L (49cm)
COLOR(S)_	Metallic titanium with night black
FRAME_	Dual-suspension BESV TRS Series alloy frame, Shimano Steps and internal battery compatible
DRIVE UNIT_	Shimano EP600 center-motor, 250W rated power, 85Nm of torque, 25km/h maximum assist
BATTERY_	720Wh integrated Lithium Ion battery, approved for Shimano Service Program, with Smart 4-5.6A charger
DISPLAY_	Shimano SC-E5003, left hand mounted, with LCD display
FORK_	SR Suntour Zeron35, 35mm stanchions, Lockout, Air damping, 1.1/8"-1.8" tapered alloy steerer, travel 150mm
REAR SHOCK_	SR Suntour Edge LOR8, 230x65, air spring
CRANKSET_	Samox for Shimano Steps, 34T chainring with ring guard
BOTTOM BRACKET_	Shimano, integrated in motor
PEDALS_	Wellgo, alloy body, ball bearings
REAR DERAILLEUR_	Shimano Deore XT RD-M8100, 12 speed
SHIFTERS_	Shimano Deore SL-M6100, 12 speed
CASSETTE_	Shimano Deore CS-M6100, 12 speed, 10-51T
CHAIN_	KMC e12Turbo, with Quick-Link
WHEELSET_	Formula CL-811 front hub, Formula CL-3248M, Boost hubs spacing, WTB STI27 29" multichamber alloy rims 32H
TIRES_	Pirelli Angel XT Urban, 57x622, Pro Compound Urban, 60 TPI + 5mm nylon wire bead, puncture protection, reflective stripe
BRAKES_	Shimano MT420, 4-piston hydraulic disc, with 203mm front and rear rotors
BRAKE LEVERS_	Shimano MT4100, 2 finger lever
HEADSET_	Acros, AZX-581, 1.8" headset, angular contact bearings, integrated cable routing
HANDLEBAR_	E-MTB reis bar, 6066 alloy, 15mm rise, sweep: 7° back, 35mm clamp
STEM_	E-MTB 3D Forged alloy stem, 35mm clamp, for internal cable routing
GRIPS_	E-MTB gel grips with padding and BESV clamp
SADDLE_	Selle Italia X3 eBike
SEATPOST_	Kind Shock e10, 30.9mm diameter
FENDERS_	Alloy extruded fenders, front & rear 3/4 length, stainless steel hardware
HEADLIGHT_	Lezyne eBike Power E115, 6-12v, 115 lux, with reflector
TAILLIGHT_	Herrmans H-Cargo, 6-12v, with reflector
REAR CARRIER_	Tubular aluminium carrier, with Snapit platform and spring clamp, H-Cargo rear light mount
ACCESSORIES_	Adjustable kickstand

12

SPEED

150^{MM}

SUSPENSION TRAVEL

85^{Nm}

TORQUE

720^{WH}

BATTERY

E - SYSTEM

_Powerful and light Shimano EP600 motor with long lasting Darfon 720Wh battery

T I R E S

_Perfect traction on and off-road thanks to Pirelli Angel XT tyres.

E Q U I P M E N T

_Additional rack, lights, fenders makes our Urban models extremely versatile.



TR S U r b a n 1 . 3

SIZES_	Man: S (42.5cm), M (46cm), L (49cm)
COLOR(S)_	Metallic steel with night black
FRAME_	Dual-suspension BESV TRS Series alloy frame, Shimano Steps and internal battery compatible
DRIVE UNIT_	Shimano EP600 center-motor, 250W rated power, 85Nm of torque, 25km/h maximum assist
BATTERY_	630Wh integrated Lithium Ion battery, approved for Shimano Service Program, with Smart 4-5.6A charger
DISPLAY_	Shimano SC-E5003, left hand mounted, with LCD display
FORK_	SR Suntour Zeron35, 35mm stanchions, Lockout, Coil damping, 1.1/8"-1.8" tapered alloy steerer, travel 150mm
REAR SHOCK_	SR Suntour Edge LOR8, 230x65, air spring
CRANKSET_	Samox for Shimano Steps, 34T chainring with ring guard
BOTTOM BRACKET_	Shimano, integrated in motor
PEDALS_	Wellgo, alloy body, ball bearings
REAR DERAILLEUR_	Shimano Deore RD-M5100, 11 speed
SHIFTERS_	Shimano Deore SL-M5100, 11 speed
CASSETTE_	Shimano Deore CS-M5100, 11 speed, 11-51T
CHAIN_	KMC e11Turbo, with Quick-Link
WHEELSET_	Formula CL-811 front hub, Formula CL-3248, Boost hubs spacing, WTB STI27 29" multichamber alloy rims 32H
TIRES_	Pirelli Angel XT Urban, 57x622, Pro Compound Urban, 60 TPI + 5mm nylon wire bead, puncture protection, reflective stripe
BRAKES_	Shimano MT420/MT410, 4/2-piston hydraulic disc, with 203mm front and rear rotors
BRAKE LEVERS_	Shimano MT4100, 2 finger lever
HEADSET_	Acros, AZX-581, 1.8" headset, angular contact bearings, integrated cable routing
HANDLEBAR_	E-MTB reis bar, 6066 alloy, 15mm rise, sweep: 7 degree back, 35mm clamp
STEM_	E-MTB 3D Forged alloy stem, 35mm clamp, for internal cable routing
GRIPS_	E-MTB gel grips with padding and BESV clamp
SADDLE_	Selle Italia X3 eBike
SEATPOST_	Kind Shock e10, 30.9mm diameter
FENDERS_	Alloy extruded fenders, front & rear 3/4 length, stainless steel hardware
HEADLIGHT_	Lezyne eBike Mini E65, 6-12v, 65 lux, with reflector
TAILLIGHT_	Herrmans H-Cargo, 6-12v, with reflector
REAR CARRIER_	Tubular aluminium carrier, with Snapit platform and spring clamp, H-Cargo rear light mount
ACCESSORIES_	Adjustable kickstand

11

SPEED

150^{MM}

SUSPENSION TRAVEL

85^{Nm}

TORQUE

630^{WH}

BATTERY

E - SYSTEM

_Powerful and light Shimano EP600 motor with long lasting Darfon 630Wh battery.

S U S P E N S I O N

_150mm travel thanks to Suntour fork and rear shock is not just better control but also improves comfort.

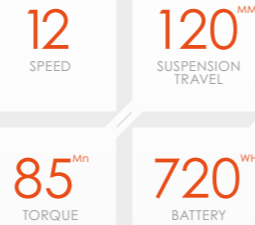
B R A K E S

_Huge range of stopping power with Shimano MT400 series brakes in combination with 203mm rotors.



TRX Urban 1.1

SIZES_	S (42.5cm), M (46cm), L (49cm)
COLOR(S)_	Metallic blue with night black
FRAME_	Hard-tail BESV TRX Series alloy frame, Shimano Steps and internal battery compatible
DRIVE UNIT_	Shimano EP600 center-motor, 250W rated power, 85Nm of torque, 25km/h maximum assist
BATTERY_	720Wh integrated Lithium Ion battery, approved for Shimano Service Program, with Smart 4-5.6A charger
DISPLAY_	Shimano SC-E5003, left hand mounted, with LCD display
FORK_	SR Suntour XCR34, 34mm stanchions, Lockout, Air damping, 1.1/8"-1.5" tapered alloy steerer, travel 120mm
CRANKSET_	Samox for Shimano Steps, 38T chainring with ring guard
BOTTOM BRACKET_	Shimano, integrated in motor
PEDALS_	Wellgo, alloy body, ball bearings
REAR DERAILLEUR_	Shimano Deore RD-M6100, 12 speed
SHIFTERS_	Shimano Deore SL-M6100, 12 speed
CASSETTE_	Shimano Deore CS-M6100, 12 speed, 10-51T
CHAIN_	KMC e12Turbo, with Quick-Link
WHEELSET_	Formula CL-811 front hub, Formula CL-3248M, Boost hubs spacing, WTB STi27 29" multichamber alloy rims 32H
TIRES_	Pirelli Angel XT Urban, 57x622, Pro Compound Urban, 60 TPI + 5mm nylon wire bead, puncture protection, reflective stripe
BRAKESET_	Shimano MT420/MT410, 4/2-piston hydraulic disc, with 203mm front and rear rotors
BRAKE LEVERS_	Shimano MT4100, 2 finger lever
HEADSET_	Acros, AZX-581, 1.5" headset, angular contact bearings, integrated cable routing
HANDLEBAR_	E-MTB reis bar, 6066 alloy, 4mm rise, sweep: 7 degree back, 31.8mm clamp
STEM_	3D Forged alloy City-Trekking stem, SP-Connect mount, 31.8mm clamp, integrated cable routing
GRIPS_	E-MTB gel grips with padding and BESV clamp
SADDLE_	Selle Italia S5 Superflow
SEATPOST_	Promax SP-726, 31.6mm diameter
FENDERS_	Alloy extruded fenders, front & rear 3/4 length, stainless steel hardware
HEADLIGHT_	Lezyne eBike Power E115, 6-12v, 115 lux, with reflector
TAILLIGHT_	Herrmans H-Cargo, 6-12v, with reflector
REAR CARRIER_	Tubular aluminium carrier, with Snapit platform and spring clamp, H-Cargo rear light mount
ACCESSORIES_	Adjustable kickstand



E - SYSTEM

_Powerful and light Shimano EP600 motor with long lasting Darfon 720Wh battery

T I R E S

_Perfect traction on and off-road thanks to Pirelli Angel XT tyres.

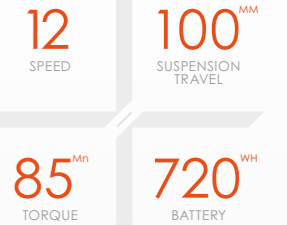
B R A K E S

_Huge range of stopping power with Shimano MT400 series brakes in combination with 203mm rotors.



TRX Urban 1.1 LS

SIZES_	XS (43cm), S (47cm), M (52cm), L (56cm)
COLOR(S)_	Metallic blue with night black
FRAME_	Hard-tail BESV TRX Series alloy frame, Shimano Steps and internal battery compatible
DRIVE UNIT_	Shimano EP600 center-motor, 250W rated power, 85Nm of torque, 25km/h maximum assist
BATTERY_	720Wh integrated Lithium Ion battery, approved for Shimano Service Program, with Smart 4-5.6A charger
DISPLAY_	Shimano SC-E5003, left hand mounted, with LCD display
FORK_	SR Suntour XCR34, 34mm stanchions, Lockout, Air damping, 1.1/8"-1.5" tapered alloy steerer, travel 100mm
CRANKSET_	Samox for Shimano Steps, 38T chainring with ring guard
BOTTOM BRACKET_	Shimano, integrated in motor
PEDALS_	Wellgo, alloy body, ball bearings
REAR DERAILLEUR_	Shimano Deore RD-M6100, 12 speed
SHIFTERS_	Shimano Deore SL-M6100, 12 speed
CASSETTE_	Shimano Deore CS-M6100, 12 speed, 10-51T
CHAIN_	KMC e12Turbo, with Quick-Link
WHEELSET_	Formula CL-811 front hub, Formula CL-3248M, Boost hubs spacing, WTB STi27 29" multichamber alloy rims 32H
TIRES_	Pirelli Angel XT Urban, 57x622, Pro Compound Urban, 60 TPI + 5mm nylon wire bead, puncture protection, reflective stripe
BRAKESET_	Shimano MT420/MT410, 4/2-piston hydraulic disc, with 203mm front and rear rotors
BRAKE LEVERS_	Shimano MT4100, 2 finger lever
HEADSET_	Acros, AZX-581, 1.5" headset, angular contact bearings, integrated cable routing
HANDLEBAR_	E-MTB reis bar, 6066 alloy, 4mm rise, sweep: 7 degree back, 31.8mm clamp
STEM_	3D Forged alloy City-Trekking stem, SP-Connect mount, 31.8mm clamp, integrated cable routing
GRIPS_	E-MTB gel grips with padding and BESV clamp
SADDLE_	Selle Italia Max S5 Superflow
SEATPOST_	Promax SP-726, 31.6mm diameter
FENDERS_	Alloy extruded fenders, front & rear 3/4 length, stainless steel hardware
HEADLIGHT_	Lezyne eBike Power E115, 6-12v, 115 lux, with reflector
TAILLIGHT_	Herrmans H-Cargo, 6-12v, with reflector
REAR CARRIER_	Tubular aluminium carrier, with Snapit platform and spring clamp, H-Cargo rear light mount
ACCESSORIES_	Adjustable kickstand



E - SYSTEM

_Powerful and light Shimano EP600 motor with long lasting Darfon 720Wh battery

E Q U I P M E N T

_Additional rack, lights, fenders makes our Urban models extremely versatile.

S A D D L E

_Specially designed saddle for eBikes from Selle Italia.



TRX Urban 1.3

SIZES_	S (42.5cm), M (46cm), L (49cm)
COLOR(S)_	Steel grey with night black
FRAME_	Hard-tail BESV TRX Series alloy frame, Shimano Steps and internal battery compatible
DRIVE UNIT_	Shimano EP600 center-motor, 250W rated power, 85Nm of torque, 25km/h maximum assist
BATTERY_	630Wh integrated Lithium Ion battery, approved for Shimano Service Program, with Smart 5.6-4A charger
DISPLAY_	Shimano SC-E5003, left hand mounted, with LCD display
FORK_	SR Suntour XCM34, 34mm stanchions, Lockout, Coil damping, 1.1/8"-1.5" tapered alloy steerer, travel 120mm
CRANKSET_	Samox for Shimano Steps, 38T chainring with ring guard
BOTTOM BRACKET_	Shimano, integrated in motor
PEDALS_	Wellgo, alloy body, ball bearings
REAR DERAILLEUR_	Microshift XLE, 10 speed
SHIFTERS_	Microshift XLE, 10 speed
CASSETTE_	Microshift XLE, 10 speed, 11-42T
CHAIN_	KMC e10Turbo, with Quick-Link
WHEELSET_	Formula CL-811 front hub, Formula CL-3248 rear hub, Boost hubs spacing, WTB ST127 29" multichamber alloy rims 32H
TIRES_	Pirelli Angel XT Urban, 57x622, Pro Compound Urban, 60 TPI + 5mm nylon wire bead, puncture protection, reflective stripe
BRAKESET_	2 finger hydraulic disc brake lever
BRAKE LEVERS_	NUTT Y-2, 2 finger lever
HEADSET_	Acros, AZX-581, 1.5" headset, angular contact bearings, integrated cable routing
HANDLEBAR_	E-MTB reis bar, 6066 alloy, 4mm rise, sweep: 7 degree back, 31.8mm clamp
STEM_	3D Forged alloy City-Trekking stem, SP-Connect mount, 31.8mm clamp, integrated cable routing
GRIPS_	E-MTB gel grips with padding and BESV clamp
SADDLE_	Selle Italia S5 Superflow
SEATPOST_	Promax SP-726, 31.6mm diameter
FENDERS_	Alloy extruded fenders, front & rear 3/4 length, stainless steel hardware
HEADLIGHT_	Lezyne eBike Mini E65, 6-12v, 65 lux, with reflector
TAILLIGHT_	Herrmans H-Cargo, 6-12v, with reflector
REAR CARRIER_	Tubular aluminium carrier, with Snapit platform and spring clamp, H-Cargo rear light mount
ACCESSORIES_	Adjustable kickstand

10 SPEED
120^{MM} SUSPENSION TRAVEL
85^{Nm} TORQUE
630^{WH} BATTERY

E - SYSTEM

_Powerful and light Shimano EP600 motor with long lasting Darfon 630Wh battery.

SAFETY

_Powerful lights from Lezyne and Herrmans keeps you safe when riding.

BRAKES

_Hydraulic disc brake with 180mm rotors.



TRX Urban 1.3 LS

SIZES_	XS (43cm), S (47cm), M (52cm), L (56cm)
COLOR(S)_	Steel grey with night black
FRAME_	Hard-tail BESV TRX Series alloy frame, Shimano Steps and internal battery compatible
DRIVE UNIT_	Shimano EP600 center-motor, 250W rated power, 85Nm of torque, 25km/h maximum assist
BATTERY_	630Wh integrated Lithium Ion battery, approved for Shimano Service Program, with Smart 5.6-4A charger
DISPLAY_	Shimano SC-E5003, left hand mounted, with LCD display
FORK_	SR Suntour XCM34, 34mm stanchions, Lockout, Coil damping, 1.1/8"-1.5" tapered alloy steerer, travel 100mm
CRANKSET_	Samox for Shimano Steps, 38T chainring with ring guard
BOTTOM BRACKET_	Shimano, integrated in motor
PEDALS_	Wellgo, alloy body, ball bearings
REAR DERAILLEUR_	Microshift XLE, 10 speed
SHIFTERS_	Microshift XLE, 10 speed
CASSETTE_	Microshift XLE, 10 speed, 11-42T
CHAIN_	KMC e10Turbo, with Quick-Link
WHEELSET_	Formula CL-811 front hub, Formula CL-3248 rear hub, Boost hubs spacing, WTB ST127 29" multichamber alloy rims 32H
TIRES_	Pirelli Angel XT Urban, 57x622, Pro Compound Urban, 60 TPI + 5mm nylon wire bead, puncture protection, reflective stripe
BRAKESET_	Hydraulic disc brake, 2-piston, 180mm front and rear rotors
BRAKE LEVERS_	2 finger hydraulic disc brake lever
HEADSET_	Acros, AZX-581, 1.5" headset, angular contact bearings, integrated cable routing
HANDLEBAR_	E-MTB reis bar, 6066 alloy, 4mm rise, sweep: 7 degree back, 31.8mm clamp
STEM_	3D Forged alloy City-Trekking stem, SP-Connect mount, 31.8mm clamp, integrated cable routing
GRIPS_	E-MTB gel grips with padding and BESV clamp
SADDLE_	Selle Italia Max S5 Superflow
SEATPOST_	Promax SP-726, 31.6mm diameter
FENDERS_	Alloy extruded fenders, front & rear 3/4 length, stainless steel hardware
HEADLIGHT_	Lezyne eBike Mini E65, 6-12v, 65 lux, with reflector
TAILLIGHT_	Herrmans H-Cargo, 6-12v, with reflector
REAR CARRIER_	Tubular aluminium carrier, with Snapit platform and spring clamp, H-Cargo rear light mount
ACCESSORIES_	Adjustable kickstand

10 SPEED
100^{MM} SUSPENSION TRAVEL
85^{Nm} TORQUE
630^{WH} BATTERY

E - SYSTEM

_Powerful and light Shimano EP600 motor with long lasting Darfon 630Wh battery.

TIRES

_Perfect traction on and off-road thanks to Pirelli Angel XT tyres.

FRAMES

_TRX Urban frame platform is designed to be robust and comfortable at the same time.



G R A V E L E B I K E S

Totally new and designed to meet every aspect of this new E bicycle category: the BESV gravel series. It's no wonder this is one of the largest growing segments in the bicycle market as this the best way to combine road, off-road and adventurous bike-packing in one bike. When developing this bike we kept in mind you will need a lightweight bike (full carbon fork), be able to take out the wheels for transport and naturally have awesome road and trail capabilities. We are offering a 1x11 and a 2x10 Shimano GRX drivetrain to make sure you can choose the best option for your riding plans. Your next adventure awaits you.



JGR 1.1

SIZES_	(45.5cm), M (49cm), L (51cm), XL (53cm)
COLOR(S)_	Metallic malachite with night black
FRAME_	BESV alloy frame with built in 360W Darfon battery, for TA 12x148 rear hub motor
DRIVE UNIT_	Formula rear hub motor, TA 12x148, 250W rated power, 50Nm of torque, 25km/h maximum assist
BATTERY_	360Wh Intube Lithium Ion battery, compatible with range extender, with Smart 2A charger
DISPLAY_	Darfon with Bluetooth connectivity for BESV APP
FORK_	BESV full carbon gravel fork, 1.1/8"-1.5" carbon steerer
CRANKSET_	Samox EC38-F13-ISIS, 40T chainring
BOTTOM BRACKET_	with cadence and torque sensor
PEDALS_	Wellgo, alloy body, ball bearings, with pins
REAR DERAILLEUR_	Shimano GRX RD-RX812, 11 speed
SHIFTERS_	included with brakeset
CASSETTE_	Shimano Deore CS-M5100, 11 speed, 10-42T
CHAIN_	KMC e11Turbo, with Quick-Link
WHEELSET_	Formula RX-512 front hub, Formula rear hub, Formula XRD-522 multichamber alloy rims 32H
TIRES_	Maxxis Rambler 700x40c, Normal compound, Silkshield guard, 60TPI foldable
BRAKESET_	Shimano GRX RX400, 2-piston hydraulic disc, with 180mm front and 160mm rear rotors
BRAKE LEVERS_	Shimano GRX RX600, dual control lever
HEADSET_	Acros, AIX-525, 1.5" headset, angular contact bearings, integrated cable routing
HANDLEBAR_	3D Forged drop bar, 6066 alloy, sweep: 5 degree back, 31.8mm clamp
STEM_	3D Forged alloy stem, 31.8mm clamp, for internal cable routing
GRIPS_	Comfortable grips with anti-slippery microfiber
SADDLE_	Selle Italia X3 eBike
SEATPOST_	Promax SP-726, 27.2mm diameter

11
SPEED

50^{Nm}
TORQUE

250^W
MOTOR

360^{WH}
BATTERY

MOTOR

_Small, silent but powerful. Specially designed for thru axle it will offer truly sporty emotions.

CONTROL

_Our new HMI is simple and easy to use. Thanks to Bluetooth it can be connected with the BESV APP.

DRIVETRAIN

_With Shimano GRX 11-speed and wide gear ratio you can ride on and off-road.



JGR 1.3

SIZES_	S (45.5cm), M (49cm), L (51cm), XL (53cm)
COLOR(S)_	Metallic umbra with night black
FRAME_	BESV alloy frame with built in 360W Darfon battery, for TA 12x148 rear hub motor
DRIVE UNIT_	Formula rear hub motor, TA 12x148, 250W rated power, 50Nm of torque, 25km/h maximum assist
BATTERY_	360Wh Intube Lithium Ion battery, compatible with range extender, with Smart 2A charger
DISPLAY_	Darfon with Bluetooth connectivity for BESV APP
FORK_	BESV full carbon gravel fork, 1.1/8"-1.5" carbon steerer
CRANKSET_	Samox EC38-F13-ISIS, 46-34T chainring
BOTTOM BRACKET_	with cadence and torque sensor
PEDALS_	Wellgo, alloy body, ball bearings, with pins
FRONT DERAILLEUR_	Shimano GRX FD-RX400, 2x10 speed
REAR DERAILLEUR_	Shimano GRX RD-RX400, 10 speed
SHIFTERS_	included with brakeset
CASSETTE_	Shimano Deore CS-M5010, 10 speed, 11-36T
CHAIN_	KMC e10Turbo, with Quick-Link
WHEELSET_	Formula RX-512 front hub, Formula rear hub, Formula XRD-522 multichamber alloy rims 32H
TIRES_	Maxxis Rambler 700x40c, Normal compound, Silkshield guard, 60TPI foldable
BRAKESET_	Shimano GRX RX400, 2-piston hydraulic disc, with 180mm front and 160mm rear rotors
BRAKE LEVERS_	Shimano GRX RX400, dual control lever
HEADSET_	Acros, AIX-525, 1.5" headset, angular contact bearings, integrated cable routing
HANDLEBAR_	3D Forged drop bar, 6066 alloy, sweep: 5 degree back, 31.8mm clamp
STEM_	3D Forged alloy stem, 31.8mm clamp, for internal cable routing
GRIPS_	Comfortable grips with anti-slippery microfiber
SADDLE_	Selle Italia X3 eBike
SEATPOST_	Promax SP-726, 27.2mm diameter

20
SPEED

50^{Nm}
TORQUE

250^W
MOTOR

360^{WH}
BATTERY

MOTOR

_Small, silent but powerful. Specially designed for thru axle it will offer truly sporty emotions.

TIRES

_Maxxis Rambler are highly rated gravel bike tires that are durable but grippy in loose terrain at the same time.

BRAKES

_Go full speed and stop anytime thanks to Shimano GRX hydraulic disc brakes.



JTR 1.1

SIZES_	(45.5cm), M (49cm), L (51cm), XL (53cm)
COLOR(S)_	Bright ceramic green with dark ceramic green
FRAME_	BESV alloy frame with built in 360W Darfon battery, for TA 12x148 rear hub motor
DRIVE UNIT_	Formula rear hub motor, TA 12x148, 250W rated power, 50Nm of torque, 25km/h maximum assist
BATTERY_	360Wh Intube Lithium Ion battery, compatible with range extender, with Smart 2A charger
DISPLAY_	Darfon with Bluetooth connectivity for BESV APP
FORK_	BESV alloy city fork, 1.1/8"-1.5" carbon steerer
CRANKSET_	Samox EC33-F13-ISIS, 40T chainring
BOTTOM BRACKET_	with cadence and torque sensor
PEDALS_	Wellgo, alloy body, ball bearings
REAR DERAILLEUR_	Shimano Deore RD-M4120, 10 speed
SHIFTERS_	Shimano Deore SL-M4100, 10 speed
CASSETTE_	Shimano Deore CS-M5010, 10 speed, 11-36T
CHAIN_	KMC e10Turbo, with Quick-Link
WHEELSET_	Formula RX-512 front hub, Formula rear hub, Formula XRD-522 multichamber alloy rims 32H
TIRES_	Maxxis Overdrive 700x40c, Normal compound, K2 guard, 60TPI foldable with reflective stripe
BRAKESET_	Hydraulic disc brake, 2-piston, 160mm front and rear rotors
BRAKE LEVERS_	2 finger hydraulic disc brake lever
HEADSET_	Acros, AIX-581, 1.5" headset, angular contact bearings, integrated cable routing
HANDLEBAR_	3D Forged alloy flat bar, 40mm rise, sweep: 30 degree back, 31.8mm clamp
STEM_	3D Forged alloy stem, 31.8mm clamp, for internal cable routing
GRIPS_	Comfortable gel grips with padding
SADDLE_	Selle Italia S5 Superflow
SEATPOST_	Promax SP-226, 27.2mm diameter
FENDERS_	Stainless steel fenders
HEADLIGHT_	Lezyne eBike Mini E65, 6-12v, 65 lux, with reflector
TAILLIGHT_	Herrmans H-Cargo, 6-12v, with reflector
REAR CARRIER_	Tubular aluminium carrier, with Snapit platform and spring clamp, H-Cargo rear light mount
ACCESSORIES_	Kickstand

10
SPEED

50^{Nm}
TORQUE

250^W
MOTOR

360^{WH}
BATTERY

MOTOR

_Small, silent but powerful. Specially designed for thru axle it will offer truly sporty emotions.

TIRES

_On the safe side with the Maxxis Overdrive.

BRAKES

_Hydraulic disc brake with 160mm rotors.



Power button / mode switch

USB charging port

Battery indicator

Light on/off switch

HMI PANEL

BIKES GEOMETRY

TCE		FRAME SIZE	M	L	XL
		RIDER HEIGHT	165-176CM	175-186CM	185-196CM
1	TOP TUBE LENGTH	593	625	648	
2	FRAME REACH	455	485	505	
3	STACK	622	631	640	
4	STAND OVER HEIGHT	799	803	821	
5	WHEEL BASE	1239	1273	1298	
6	HEAD TUBE LENGTH	110	120	130	
7	HEAD TUBE ANGLE	64°	64°	64°	
8	SEAT TUBE ANGLE	77°	77°	77°	
9	SEAT TUBE LENGTH	415	430	460	
10	CHAINSTAY LENGTH	445	445	445	
11	BB DROP	27	27	27	

TCA		FRAME SIZE	S	M	L
		RIDER HEIGHT	165-176CM	175-186CM	185-196CM
1	TOP TUBE LENGTH	590	623	645	
2	FRAME REACH	465	495	515	
3	STACK	615	623	632	
4	STAND OVER HEIGHT	799	803	821	
5	WHEEL BASE	1233	1267	1292	
6	HEAD TUBE LENGTH	110	120	130	
7	HEAD TUBE ANGLE	65°	65°	65°	
8	SEAT TUBE ANGLE	78°	78°	78°	
9	SEAT TUBE LENGTH	415	430	460	
10	CHAINSTAY LENGTH	447	447	447	
11	BB DROP	32	32	32	



TRX AND TRX URBAN MODELS		FRAME SIZE	S	M	L
		RIDER HEIGHT	163-176CM	174-188CM	185-197CM
1	TOP TUBE LENGTH	627	644	670	
2	FRAME REACH	420	435	460	
3	STACK	639	644	648	
4	STAND OVER HEIGHT	813	828	835	
5	WHEEL BASE	1164	1180	1207	
6	HEAD TUBE LENGTH	120	125	130	
7	HEAD TUBE ANGLE	68.5°	68.5°	68.5°	
8	SEAT TUBE ANGLE	72°	72°	72°	
9	SEAT TUBE LENGTH	425	460	490	
10	CHAINSTAY LENGTH	460	460	460	
11	BB DROP	50.7	50.7	50.7	

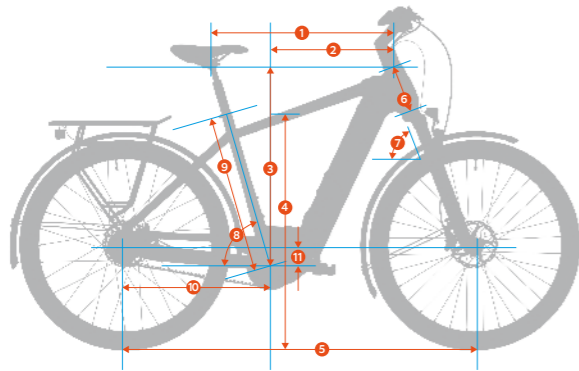
TRS AND TRS URBAN MODELS		FRAME SIZE	S	M	L
		RIDER HEIGHT	165-175CM	174-187CM	185-195CM
1	TOP TUBE LENGTH	599	621	657.5	
2	FRAME REACH	420	440	475	
3	STACK	612	613	612	
4	STAND OVER HEIGHT	836	841	844	
5	WHEEL BASE	1218	1240	1278	
6	HEAD TUBE LENGTH	120	125	130	
7	HEAD TUBE ANGLE	65°	65°	65°	
8	SEAT TUBE ANGLE	70°	70°	70°	
9	SEAT TUBE LENGTH	425	460	490	
10	CHAINSTAY LENGTH	465	465	465	
11	BB DROP	15	15	15	

JGR / JTR		FRAME SIZE	XS	S	M	L
		RIDER HEIGHT	155-165CM	163-175CM	174-185CM	184-195CM
1	TOP TUBE LENGTH	525	540	555	570	
2	FRAME REACH	374	384	395	406	
3	STACK	563	579	595	612	
4	STAND OVER HEIGHT	748	767	785	804	
5	WHEEL BASE	1037	1048	1060	1071	
6	HEAD TUBE LENGTH	145	160	175	190	
7	HEAD TUBE ANGLE	69.5	70	70.5	71	
8	SEAT TUBE ANGLE	75	75	75	75	
9	SEAT TUBE LENGTH	455	490	510	530	
10	CHAINSTAY LENGTH	431	431	431	431	
11	BB DROP	70	70	70	70	

BIKES GEOMETRY

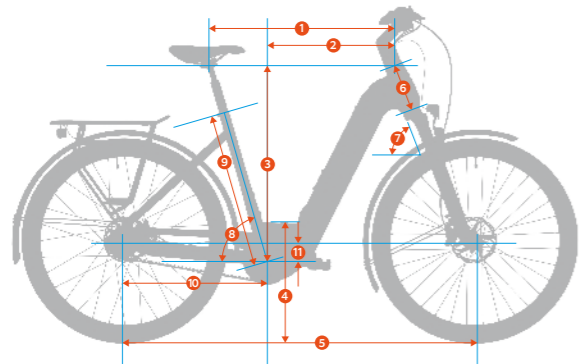


CT/TR 1.SERIES - MAN



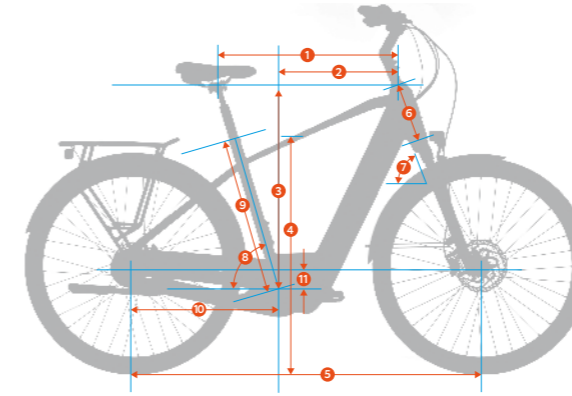
	FRAME SIZE	S	M	L	XL
	RIDER HEIGHT	165-176CM	174-185CM	183-195CM	190-205CM
1	TOP TUBE LENGTH	595	600	610	625
2	FRAME REACH	398.5	401	415	428
3	STACK	642	651	656	665
4	STAND OVER HEIGHT	836	865	882	903
5	WHEEL BASE	1158	1164	1181	1197
6	HEAD TUBE LENGTH	145	155	160	170
7	HEAD TUBE ANGEL	68.5°	68.5°	68.5°	68.5°
8	SEAT TUBE ANGLE	73.5°	73.5°	73.5°	73.5°
9	SEAT TUBE LENGTH	470	520	560	600
10	CHAINSTAY LENGTH	487	487	487	487
11	BB DROP	60	60	60	60

CT/TR 1.SERIES, TRX, TRX URBAN - LADY



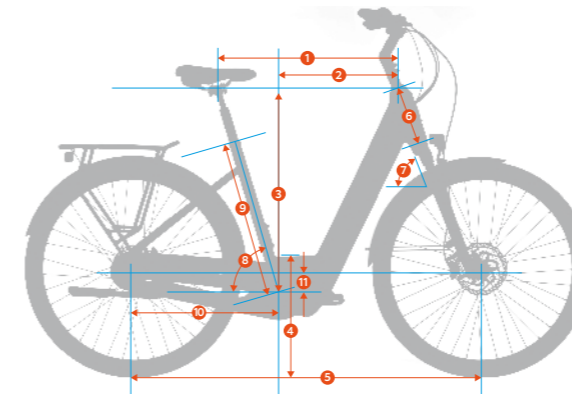
	FRAME SIZE	XS	S	M	L
	RIDER HEIGHT	150-165CM	164-175CM	175-188CM	187-198CM
1	TOP TUBE LENGTH	595	610	620	630
2	FRAME REACH	398.5	410	425.5	432.8
3	STACK	642	652	656	665
4	STAND OVER HEIGHT	542	542	534	534
5	WHEEL BASE	1158	1174	1190	1202
6	HEAD TUBE LENGTH	145	155	160	170
7	HEAD TUBE ANGEL	68.5°	68.5°	68.5°	68.5°
8	SEAT TUBE ANGLE	73.5°	73.5°	73.5°	73.5°
9	SEAT TUBE LENGTH	430	470	520	560
10	CHAINSTAY LENGTH	487	487	487	487
11	BB DROP	60	60	60	60

CT/TR 2.SERIES - MAN



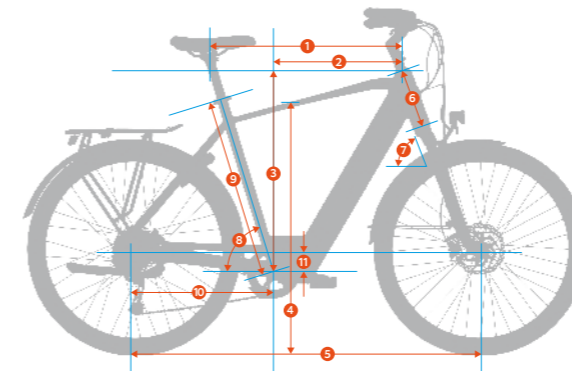
	FRAME SIZE	L	XL
	RIDER HEIGHT	173-188CM	185-200CM
1	TOP TUBE LENGTH	610	630
2	FRAME REACH	407	427
3	STACK	661	663
4	STAND OVER HEIGHT	833	864
5	WHEEL BASE	1158	1172
6	HEAD TUBE LENGTH	190	190
7	HEAD TUBE ANGEL	69.5°	70°
8	SEAT TUBE ANGLE	73°	73°
9	SEAT TUBE LENGTH	550	600
10	CHAINSTAY LENGTH	485	485
11	BB DROP	65	65

CT/TR 2.SERIES - LADY



	FRAME SIZE	S	M	L
	RIDER HEIGHT	160-175CM	170-185CM	180-195CM
1	TOP TUBE LENGTH	590	590	610
2	FRAME REACH	388	388	407
3	STACK	659	659	661
4	STAND OVER HEIGHT	408	408	408
5	WHEEL BASE	1144	1144	1158
6	HEAD TUBE LENGTH	190	190	190
7	HEAD TUBE ANGEL	69°	69°	69.5°
8	SEAT TUBE ANGLE	73°	73°	73°
9	SEAT TUBE LENGTH	450	500	550
10	CHAINSTAY LENGTH	485	485	485
11	BB DROP	65	65	65

CT LE / TR LE



	FRAME SIZE	M	L
	RIDER HEIGHT	174-185CM	183-195CM
1	TOP TUBE LENGTH	590	610
2	FRAME REACH	388	407
3	STACK	659	661
4	STAND OVER HEIGHT	631	631
5	WHEEL BASE	1144	1158
6	HEAD TUBE LENGTH	190	190
7	HEAD TUBE ANGEL	69°	69.5°
8	SEAT TUBE ANGLE	73°	73°
9	SEAT TUBE LENGTH	500	550
10	CHAINSTAY LENGTH	485	485
11	BB DROP	65	65

D I S T R I B U T O R S

ACTION SPORTS SRL

Avenue Peltzer 64/1 | 4800 Verviers | Belgium
info@actionsports.be
Service Phone: +32 87 89 97 70

GROFA® ACTION SPORTS GMBH

Otto-Hahn-Straße 17 | D-65520 Bad Camberg | Germany
info@grofa.com
Service Phone: +49 6434 2008 200

ORIGOS

Kasárenská 2050 | 911 05 Trenčín | Slovakia
info@origos.eu
Service Phone: +421 32 202 3680

THE DUTCH BIKE COMPANY

Florijnweg 23e | 6883 JN Velp | The Netherlands
info@dutchbikecompany.nl
Service Phone: +31 26 303 3820

WITT A/S

Gødstrup Søvej 9 | 7400 Herning | Danmark
info@witt.dk
Service Phone: +45 70 25 23 23

G.R. BIKE

Via Lussemburgo 2 | Camin Industrial Zone 35127 Padova (PD) | Italy
info@grbike.com
Service Phone: +39 049 8700279 / 8700319

ALL SPECIFICATIONS SUBJECT TO CHANGE WITHOUT NOTICE.
For the most current specifications, geometry and bike images please visit
the BESV website: www.besv.eu



PRESENTED BY

BESV
Premium e-bikes

DARFON EUROPE BV

Habraken 2145A | 5507 TE, Veldhoven | The Netherlands
info@besv.eu

Service Phone: +31 (0) 4030 31600



9 504518 511191